



# Livestock and Livestock Products Board of Namibia

## MARKET WATCH

### Beef & Pork March 2025

T: +264 61 275 846 • F: +264 61 228 310 • E: [Statistician@nammic.com.na](mailto:Statistician@nammic.com.na)

• [www.nammic.com.na](http://www.nammic.com.na)

Agricultural Boards Building • 30 David Hosea Meroro Rd • PO Box 38

Windhoek, Namibia



# Beef Monthly Market Watch



## February 2025 review

Total marketing of cattle decreased by 58.95% on a year-on-year basis, from the 30 497 cattle marketed in February 2024 to 12 520 in February 2025. On a year-on-year basis, live exports are 79.46% lower than observed in February 2024. Exports decreased by 3.42% from the 4 595 cattle heads exported in January 2025 to 4 438 cattle heads exported during February 2025. South Africa absorbed majority of cattle (weaner) exports from Namibia, while reduced quantities were exported to Botswana. Weaner sVCF auction prices reduced by N\$0.33/kg from price of N\$28.59/kg observed during January 2025 to N\$28.26/kg in February 2025.

### WEANER AUCTION PRICE

sVCF

N\$ 28.26/kg

### AUCTION PRICES

nVCF

Heifers - N\$38.24/kg

### B2

CARCASS PRICE

N\$ 71.53/kg

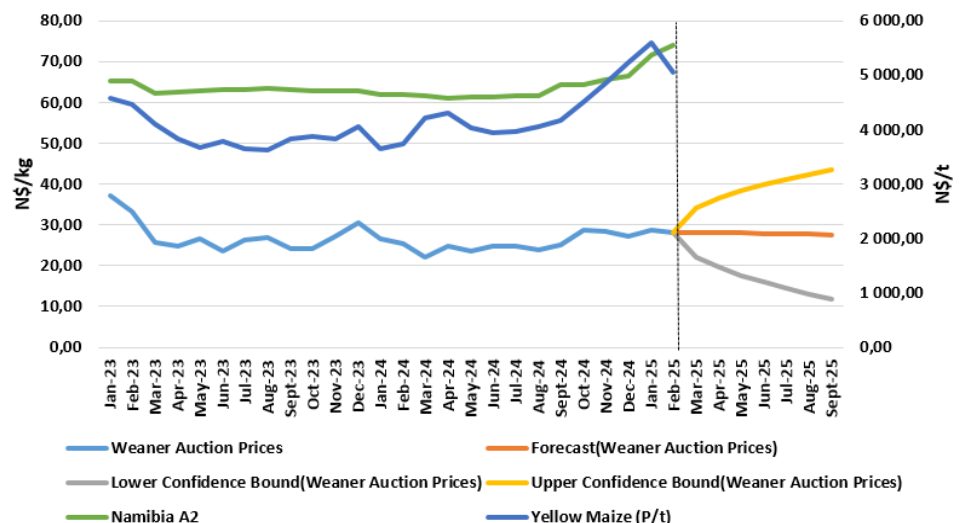
### WEANER/B2 PRICE RATIO

40%

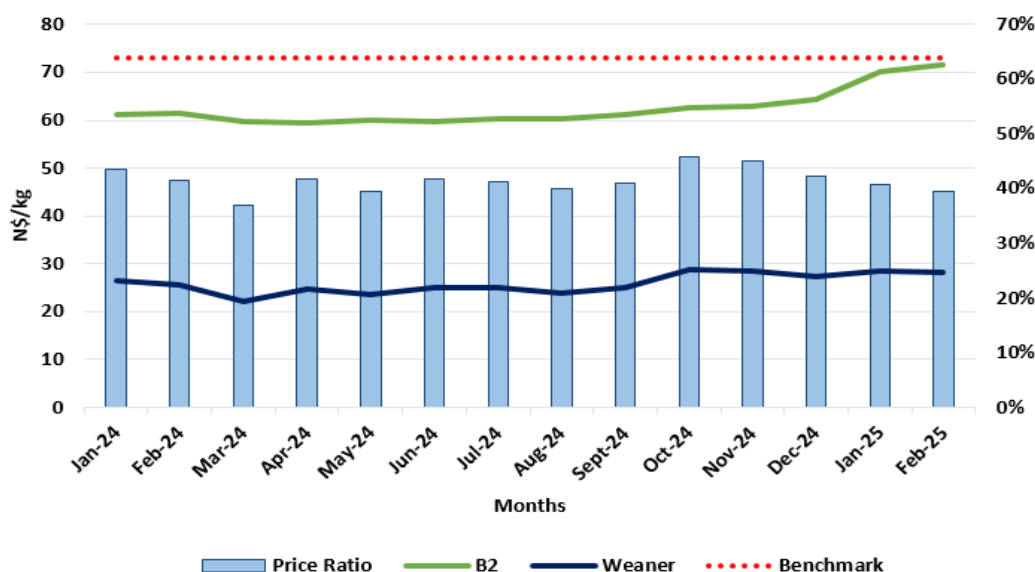
Weaner auction prices increased by 2.71% from N\$25.55/kg in February 2024 to N\$28.26/kg in February 2025. However, on a month-on-month basis, the sVCF weaner auction prices decreased by 1.15% during the period under review.

Yellow maize prices in South Africa decreased by 9.68% from N\$5 605.05/t in January 2025 to N\$5 062.60/t during February. The weaner prices are likely to decrease by 0.32% (N\$28.17/kg in March 2025) due to slight in demand from South Africa.

### sVCF Weaner Auction Price Trends



### Weaner/B2 Price Ratio



The weaner/B2 price ratio during February 2025 stood at 40%, compared to the 41% recorded in January 2025.

The weaner/B2 price ratio is below the benchmark 64%, during the period under review.

Disclaimer: All statements regarding future events reflect the Livestock and Livestock Products Board's views, and are not a guarantee of future performance or developments.



# Beef Monthly Market Watch



**LIVESTOCK  
AND LIVESTOCK  
PRODUCTS BOARD  
OF NAMIBIA**

Producer Prices (Excl. Vat) - N\$/kg

Forecast

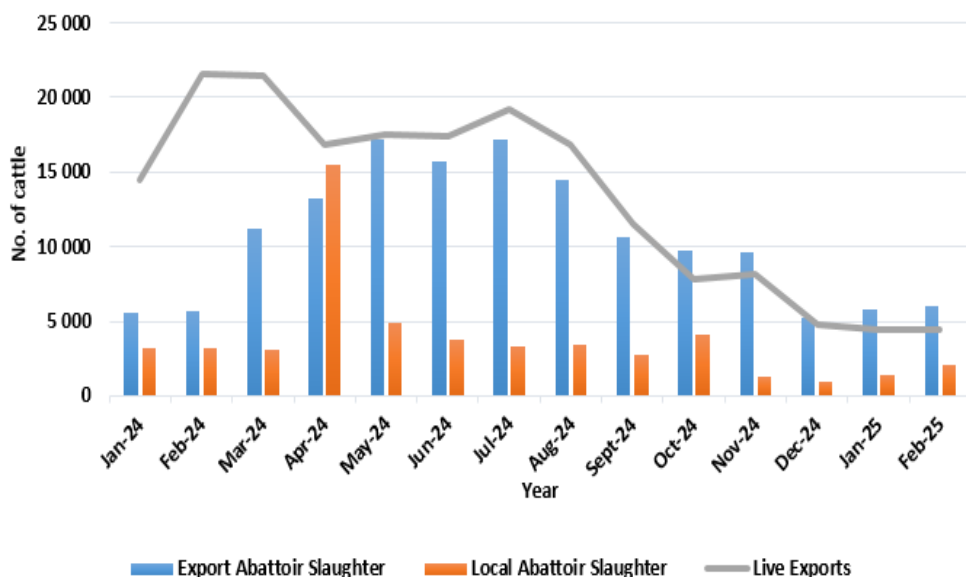
Month	Feb-24	Nov-24	Dec-24	Jan-25	Feb-25	Δ y/y %	Mar-25
Weaner Auction Price	25.55	28.41	27.29	28.59	28.26	10.61	28.17
Slaughter Oxen Auction Price	28.05	34.36	33.13	37.11	35.53	26.67	35.67
Class B2 (NAM)	61.59	63.01	64.45	70.20	71.53	16.14	71.64
Class B2 (RMAA)	48.74	47.92	50.38	50.02	49.49	1.53	49.11
All-Grade Carcass Price	58.43	59.40	59.34	64.01	66.32	13.51	66.33

Beef all-grade and NAM B2 carcass producer prices are forecasted to N\$66.33/kg and N\$71.64/kg during March, respectively.

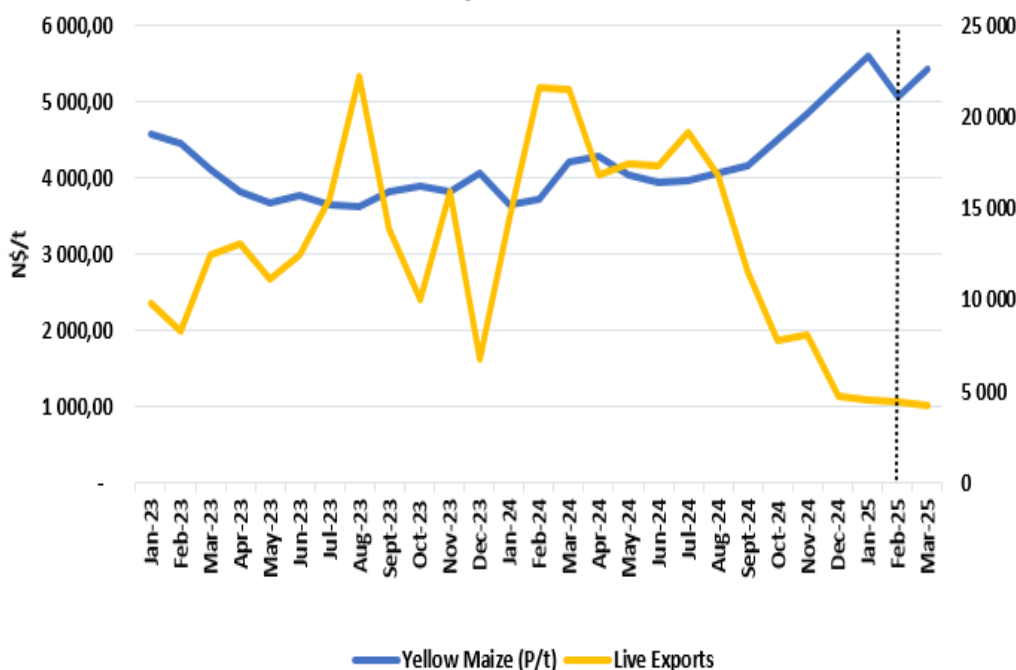
During the period under review, slaughter oxen carcass prices decreased by 4.26%, while the B2 (RMAA) decreased by 1.06%.

The all-grade carcass price increased by 3.61%, from N\$64.01/kg recorded in January 2025 to N\$66.32/kg in February 2025.

Cattle Marketing Trends

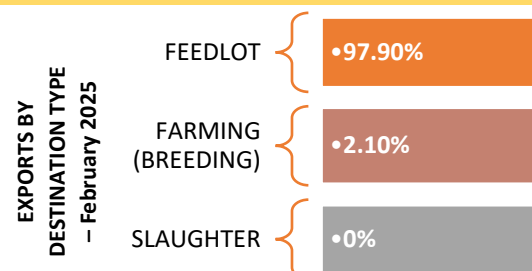


Cattle Live Exports Vs Yellow Maize



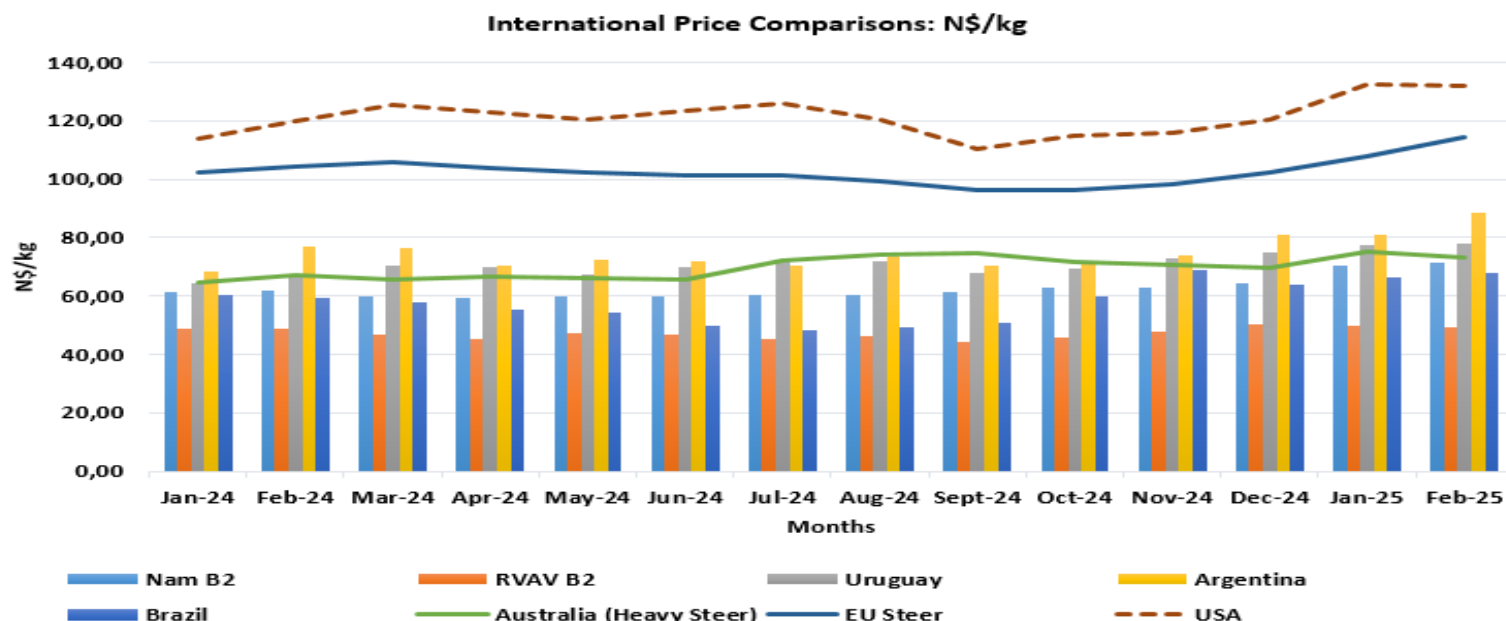
SAFEX Feed prices for Yellow Maize recorded an average price of N\$5 062.60/t during February 2025, depicting a decrease of 9.68% on a month-to-month basis.

The decrease is due to higher-than-expected yellow maize yields. Additionally, a reduction in export demand for yellow maize caused an oversupply in the local market causing prices to decrease slightly. Despite a drop in yellow maize price, demand for weaners has been somewhat sluggish.



Disclaimer: All statements regarding future events reflect the Livestock and Livestock Products Board's views, and are not a guarantee of future performance or developments.

# Beef Monthly Market Watch



USA prices increased from N\$119.85/kg in February 2024 to N\$131.74/kg in February 2025, depicting an increase of 9.92% on a year-on-year basis, and a decrease of 0.55% on a monthly basis. The increase was due to rising inflation rates and prolonged effects of climatic conditions, which increased production costs of farmers.

EU steer prices have increased to N\$114.40/kg in February 2025 from N\$107.98/kg recorded during January 2025, showing an increase of 5.94%, month-on-month basis. Brazil prices increased from N\$66.28/kg in January 2025 to N\$67.88/kg in February 2025, representing an increase of 2.42%. On a year-on-year basis, these prices increased by 14.18%.

The Namibia B2 prices increased by 1.90% on a month-on-month basis, and the Uruguay prices increased by 0.34% during the same period. Australian beef prices decreased by 2.42% on a month-to-month basis during the period under review.

During the period under review, class A, AB, B and C carcass prices increased by 3.93%, 6.21%, 6.35%, and 1.76% on a month-to-month basis.

Class A, AB, B and C carcass prices increased on a Y-O-Y basis by 18.39%, 13.77%, 24.28%, and 17.63% respectively.

Seasonal Indicators	Dec-24	Jan-25	Feb-25	Mar-25
Livestock Exports				
Local Abattoir Slaughter				
Export Abattoir Slaughter				
NAM B2 Carcass Price				
Weaner Price				
Decline	Growth	Steady		

## Beef Producer Prices: Beef Market – Namibia (N\$/kg)

	Feb-25	% Δ m/m	% Δ y/y	Jan-25	Dec-24	Nov-24
Class A	72.00	3.93	18.39	69.28	65.01	63.63
Class AB	69.42	6.21	13.77	65.36	63.31	60.97
Class B	70.73	6.35	24.28	66.50	62.52	62.57
Class C	65.92	1.76	17.63	64.78	55.31	57.94

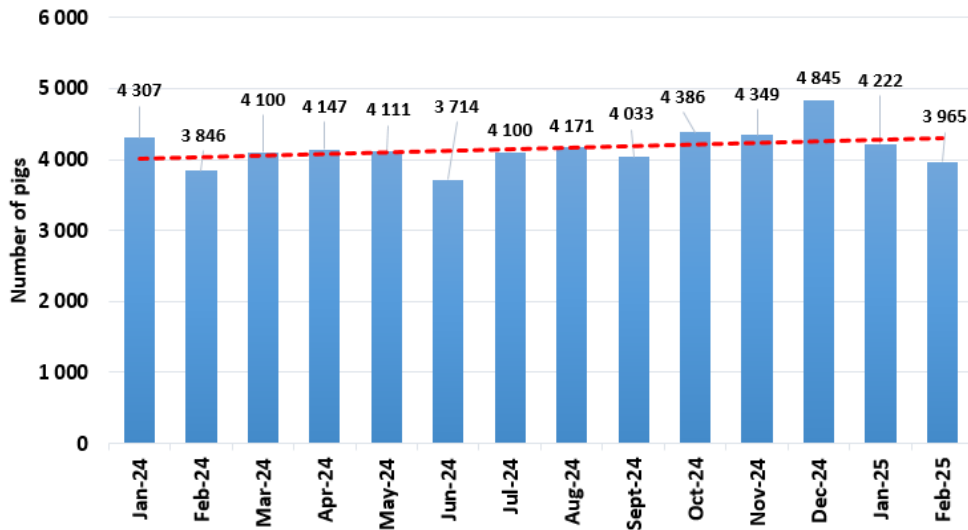
Disclaimer: All statements regarding future events reflect the Livestock and Livestock Products Board's views, and are not a guarantee of future performance or developments.

# Pork Monthly Market Watch

## February 2025 Review

3 965 pigs were slaughtered in February 2025, recording an increase of 3.09% from the February 2024 level, on a year-on-year basis. On a month-to-month basis, pigs slaughtered decreased by 6.09% from the previous number of 4 222 heads slaughtered during January 2025.

**B & C Class Abattoir Pig Slaughter Trends - Namibia**



During the period under review, the Mariental and Halooli abattoirs slaughtered 2 607 and 1 114 pigs, respectively.

**Local Slaughter of Pigs (n)**

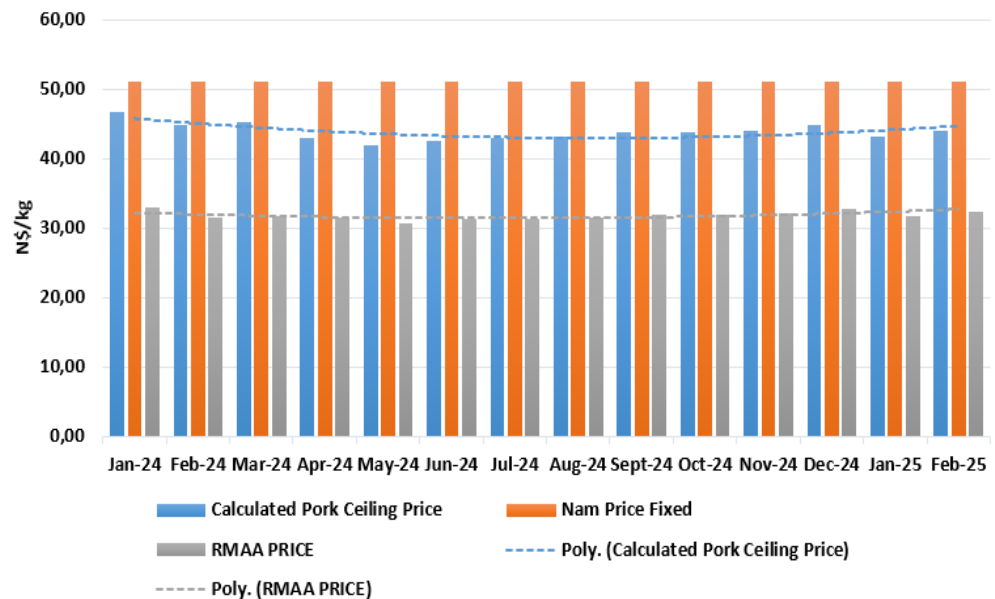
Feb-24	Jan-25	Feb-25	Δ% m/m	Δ% y/y
3 846	4 222	3 965	-6.09	3.09

The Namibian pork ceiling price under the Pork Scheme is still fixed at N\$51.03/kg in an effort to lessen the negative effects of the falling RMAA pork price, which is used as the basis for calculating the Namibian ceiling price. The Calculated ceiling price increased by 1.64% during February 2025.

South African (RMAA) pork prices increased from the N\$31.76/kg recorded during January 2025, to N\$32.38/kg in February 2025.

Germany recorded a producer price of N\$32.02/kg during February 2025, a decrease of 1.20% on a month-to-month basis. Due to FMD outbreak in Germany, strict control measures have been imposed to contain the disease.

**Nam Pork Ceiling Price vs RMAA Price (N\$/kg)**



**SAFEX Feed Prices: N\$/tonne**

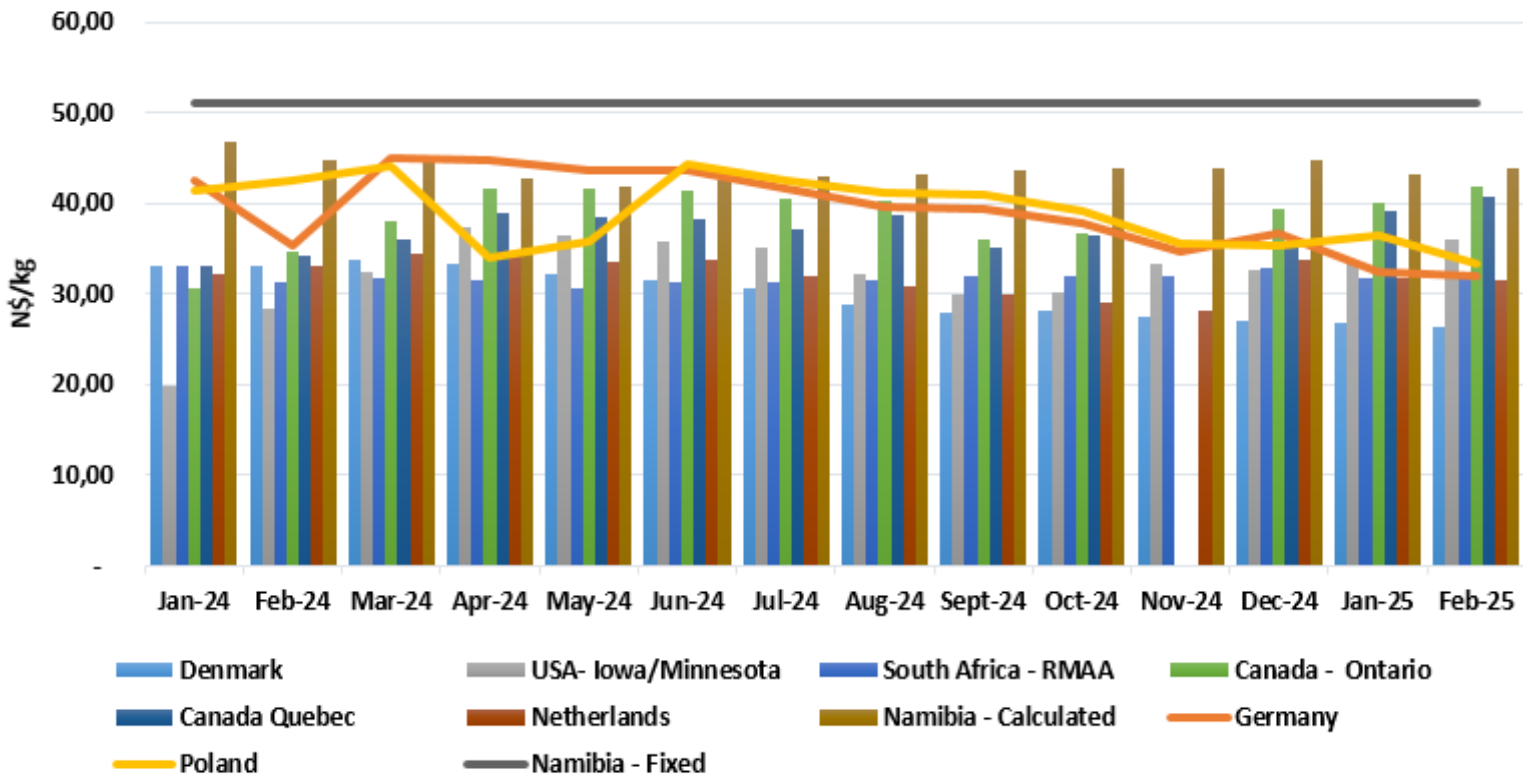
	Feb-25	% Δ m/m	% Δ y/y	Jan-25	Dec-24	Nov-24
<b>Sunflower</b>	9 501.15	-5.85	13.30	10 091.00	10 371.47	10 865.95
<b>Soya Beans</b>	8 995.95	-5.58	10.24	9 527.38	9 093.38	9 027.86

Disclaimer: All statements regarding future events reflect the Livestock and Livestock Products Board's views, and are not a guarantee of future performance or developments.

# Pork Monthly Market Watch



Average Int. Producer Carcass Price Comparison -N\$/kg



## NAMIBIA PORK MARKETING SNAPSHOT

February 2025

**3 965**  
Pigs slaughtered

**1 114**  
Pigs slaughtered at  
Halooli Abattoir

**2 607**  
Pigs slaughtered at  
Mariental Abattoir

**N\$43.94/kg**  
Calculated pork ceiling price

**N\$51.03/kg**  
Pork ceiling price

Disclaimer: All statements regarding future events reflect the Livestock and Livestock Products Board’s views, and are not a guarantee of future performance or developments.