



# Livestock and Livestock Products Board of Namibia

## MARKET WATCH

### Beef & Pork January 2025

T: +264 61 275 846 • F: +264 61 228 310 • E: [Statistician@nammic.com.na](mailto:Statistician@nammic.com.na)

• [www.nammic.com.na](http://www.nammic.com.na)

Agricultural Boards Building • 30 David Hosea Merero Rd • PO Box 38

Windhoek, Namibia



# Beef Monthly Market Watch



## December 2024 review

Total marketing of cattle decreased by 29.72% on a year-on-year basis, from the 15 573 cattle marketed in December 2023 to 10 944 in December 2024. On a year-on-year basis, live exports are 29.76% lower than observed in December 2023. Exports increased by 41.73% from the 8 152 cattle heads exported in November to 4 751 cattle heads exported during December 2024. South Africa absorbed majority of cattle (weaner) exports from Namibia, while reduced quantities were exported to Zimbabwe and Botswana. Weaner sVCF auction prices reduced by N\$1.12/kg from price of N\$28.41/kg observed in November to N\$27.29/kg in December 2024.

### WEANER AUCTION PRICE

SVCF

N\$ 27.29/kg

### nVCF AUCTION PRICES

Heifers - N\$24.40/kg

### B2

CARCASS PRICE

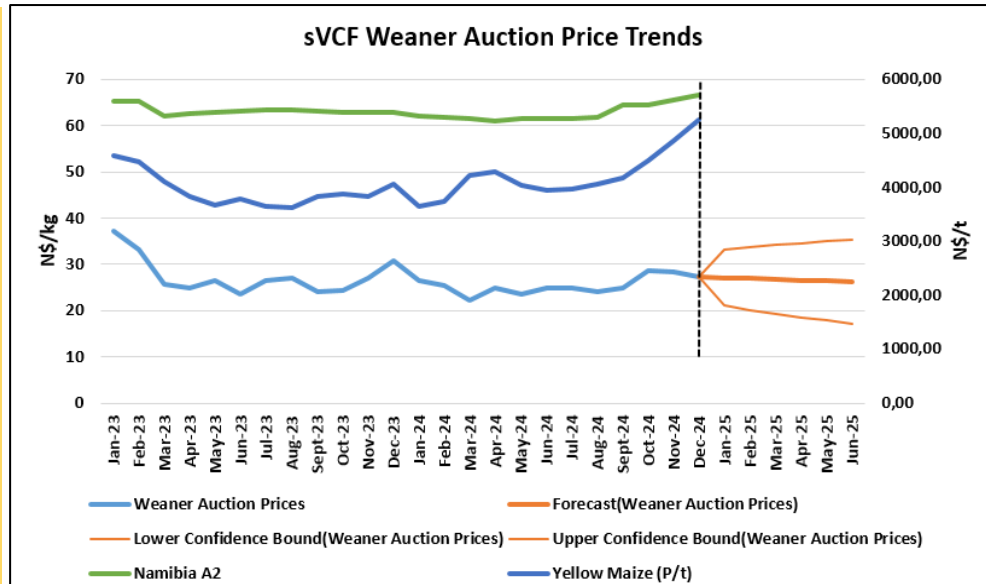
N\$ 64.45/kg

### WEANER/B2 PRICE RATIO

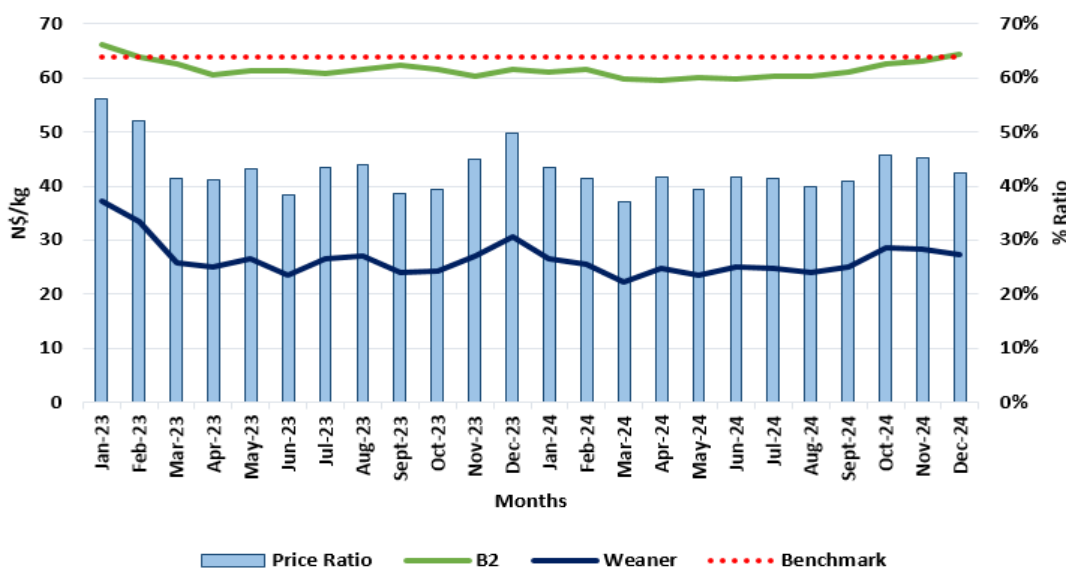
42%

Weaner auction prices decreased by 11.08% from N\$30.69/kg in December 2023 to N\$27.29/kg in December 2024. On a month-on-month basis, the sVCF weaner auction prices decreased by 3.94% during the period under review.

Yellow maize prices in South Africa increased by 7.97% during December 2024. The weaner prices are forecasted to decrease by 0.76% (N\$27.08/kg in January 2025), due to decline in demand from South Africa.



### Weaner/B2 Price Ratio



The weaner/B2 price ratio during December 2024 stood at 42%, compared to the 45% recorded in November 2024.

Due to a general decline in weaner prices, the weaner/B2 price ratio has been below the benchmark 64%.

Disclaimer: All statements regarding future events reflect the Livestock and Livestock Products Board's views, and are not a guarantee of future performance or developments.

# Beef Monthly Market Watch



**LIVESTOCK  
AND LIVESTOCK  
PRODUCTS BOARD  
OF NAMIBIA**

**Producer Prices (Excl. Vat) - N\$/kg**

**Forecast**

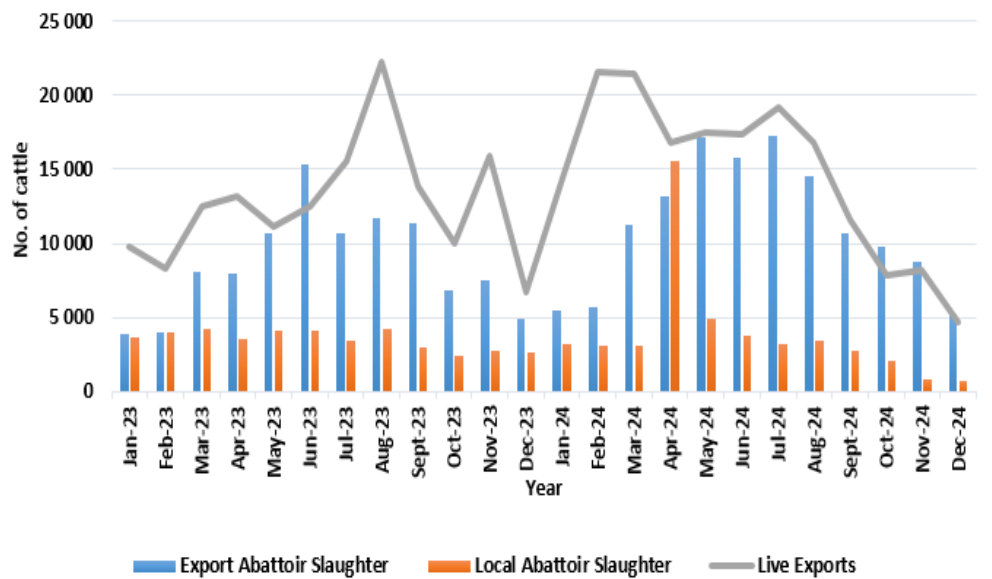
Month	Dec-23	Sep-24	Oct-24	Nov-24	Dec-24	Δ y/y %	Jan-25
Weaner Auction Price	30.69	25.02	28.67	28.41	27.29	-11.08	27.08
Slaughter Oxen Auction Price	30.16	30.07	32.23	34.36	33.13	9.85	31.14
Class B2 (NAM)	61.71	61.19	62.63	63.01	64.45	4.44	63.27
Class B2 (RMAA)	49.82	44.24	45.55	47.92	50.38	1.11	49.33
All-Grade Carcass Price	59.54	58.56	59.10	59.40	59.34	-0.34	57.69

Beef all-grade and NAM B2 carcass producer prices are forecasted to N\$57.69/kg and N\$63.27/kg in January, respectively.

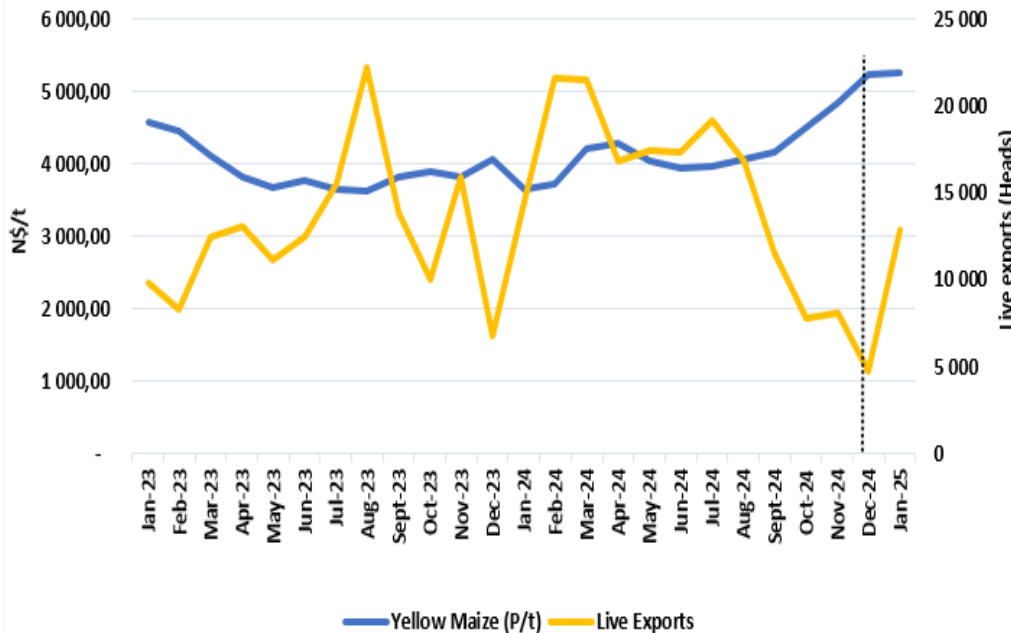
During the period under review, slaughter oxen carcass prices decreased by 3.58%, while the RMAA B2 increased by 5.13%.

The all-grade carcass price decreased by 0.11%, from N\$59.40/kg recorded in November 2024 to N\$59.34/kg in December 2024.

**Cattle Marketing Trends**

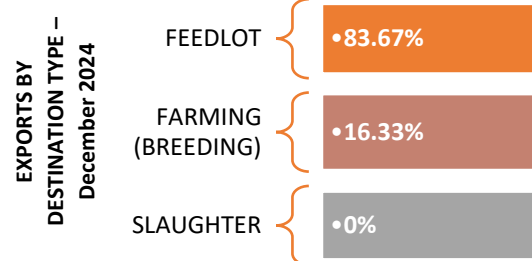


**Cattle Live Exports Vs Yellow Maize**



During January to November 2024, the SAFEX Feed prices for Yellow Maize have continuously trended under N\$5000/ton. However, December 2024 recorded an average price of N\$5 244.53/t, depicting an increase of 7.97% on a month-to-month basis.

The increase in prices is attributed to reduced supply, increased demand, and climatic conditions during the period under review.



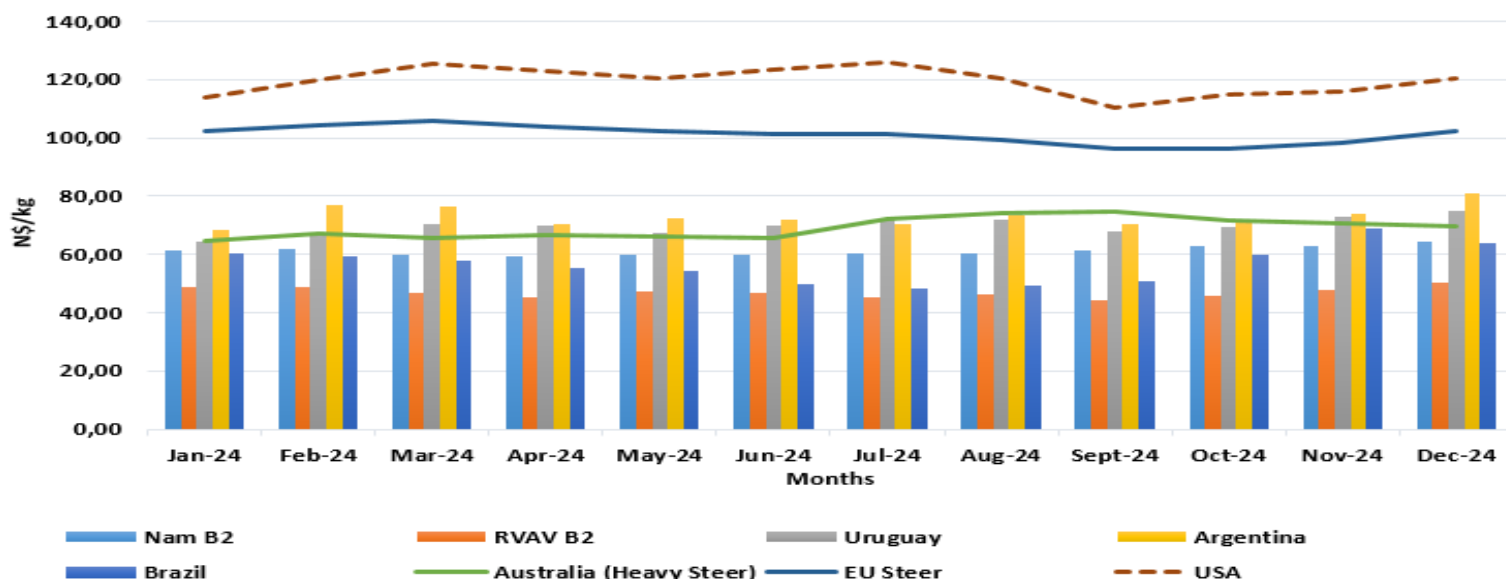
Disclaimer: All statements regarding future events reflect the Livestock and Livestock Products Board's views, and are not a guarantee of future performance or developments.

# Beef Monthly Market Watch



**LIVESTOCK  
AND LIVESTOCK  
PRODUCTS BOARD  
OF NAMIBIA**

International Price Comparisons: N\$/kg



USA prices increased from N\$111.32/kg in December 2023 to N\$120.61/kg in December 2024, depicting an increase of 8.34% on a year-on-year basis, and an increase of 4.04% on a monthly basis. The increase is attributed to inflation, increased market demand, and supply challenges.

EU steer prices have increased to N\$102.20/kg in December 2024 from N\$98.08/kg recorded in November 2024, depicting an increase of 4.20%, month-on-month basis. Brazil prices decreased from N\$68.68/kg in November 2024 to N\$63.85/kg in December 2024, depicting a decrease of 7.03%. However, on a year-on-year basis, these prices increased by 4.90%. Increase in prices is attributed to supply challenges and increased global supply and production challenges in Brazil.

The Namibia B2 prices increased by 2.29% on a month-on-month basis, and the Uruguay prices increased by 2.43% during the same period. Australian beef prices decreased by 1.59% on a month-to-month basis during the period under review.

Class B carcass price decreased by 0.07% on a month-to-month basis, and increased by 0.62% on a year-to-year basis.

Class A and AB carcass prices increased on a Y-O-Y basis by 5.65% and 2.97%, respectively. While class C carcass prices decreased by 7.52%.

Class A and AB carcass prices increased by 2.17% and 3.83% on a month-to-month basis, while class C carcass prices decreased by 4.54% during the period under review.

Seasonal Indicators	Oct-24	Nov-24	Dec-24	Jan-25
Livestock Exports	Decline	Growth	Decline	Growth
Local Abattoir Slaughter	Decline	Decline	Decline	Decline
Export Abattoir Slaughter	Decline	Decline	Decline	Decline
NAM B2 Carcass Price	Growth	Growth	Growth	Growth
Weaner Price	Growth	Decline	Decline	Decline
<b>Decline</b>	<b>Growth</b>	<b>Steady</b>		

Beef Producer Prices: Beef Market – Namibia (N\$/kg)

	Dec-24	% Δ m/m	% Δ y/y	Nov-24	Oct-24	Sept-24
Class A	65.01	2.17	5.65	63.63	63.11	63.04
Class AB	63.31	3.83	2.97	60.97	62.20	61.50
Class B	62.52	-0.07	0.62	62.57	61.16	59.47
Class C	55.31	-4.54	-7.52	57.94	58.39	57.71

Disclaimer: All statements regarding future events reflect the Livestock and Livestock Products Board's views, and are not a guarantee of future performance or developments.

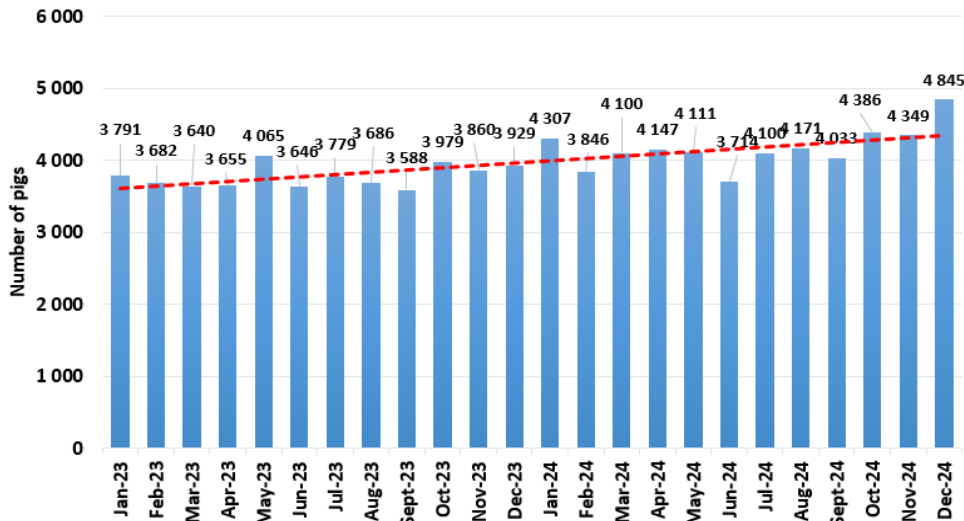
# Pork Monthly Market Watch



## December 2024 Review

A total of 4 845 pigs were slaughtered in December 2024, recording an annual increase of 23.31% from the December 2023 level, on a year-on-year basis. On a month-to-month basis, pigs slaughtered increased by 11.40% from the previous number of 4 349 heads slaughtered during November 2024.

B & C Class Abattoir Pig Slaughter Trends - Namibia



During the period under review, the Mariental and Halooli abattoirs slaughtered 3 199 and 1 454 pigs, respectively.

Local Slaughter of Pigs (n)

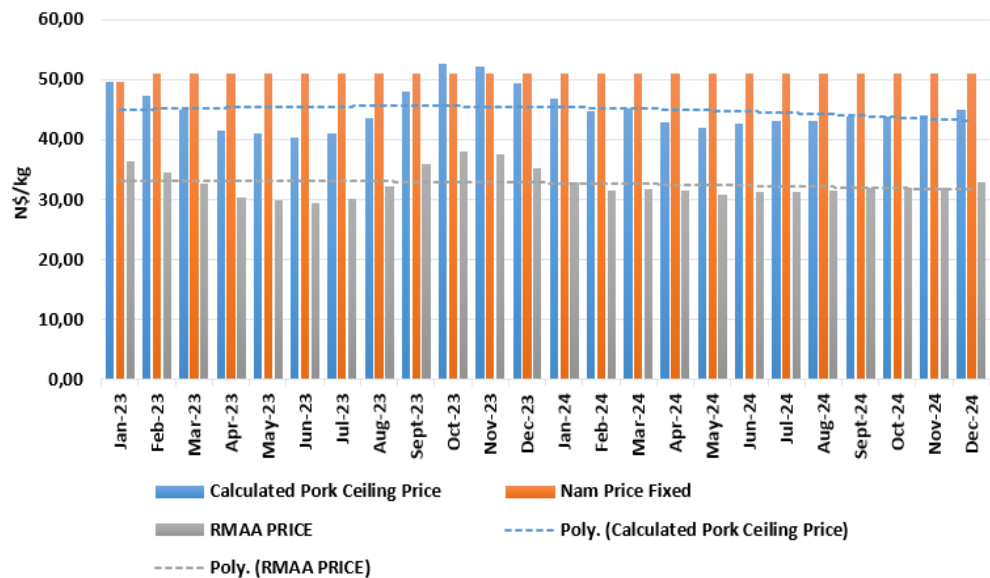
Dec-23	Nov-24	Dec-24	Δ% m/m	Δ% y/y
3 929	4 349	4 845	11.40	23.31

The Namibian pork ceiling price under the Pork Scheme is still fixed at N\$51.03/kg in an effort to lessen the negative effects of the falling RMAA pork price, which is used as the basis for calculating the Namibian ceiling price. The Calculated pork ceiling price increased by 2.09% during December 2024.

South African (RMAA) pork prices similarly have increased from the N\$32.06/kg recorded in November 2024, to N\$32.85/kg in December. This represents an increase of 2.48% on a month-to-month basis.

Germany recorded a price of N\$36.77/kg during December 2024, an increase of 6.26% on a month-to-month basis.

Nam Pork Ceiling Price vs RMAA Price (N\$/kg)



SAFEX Feed Prices: N\$/tonne

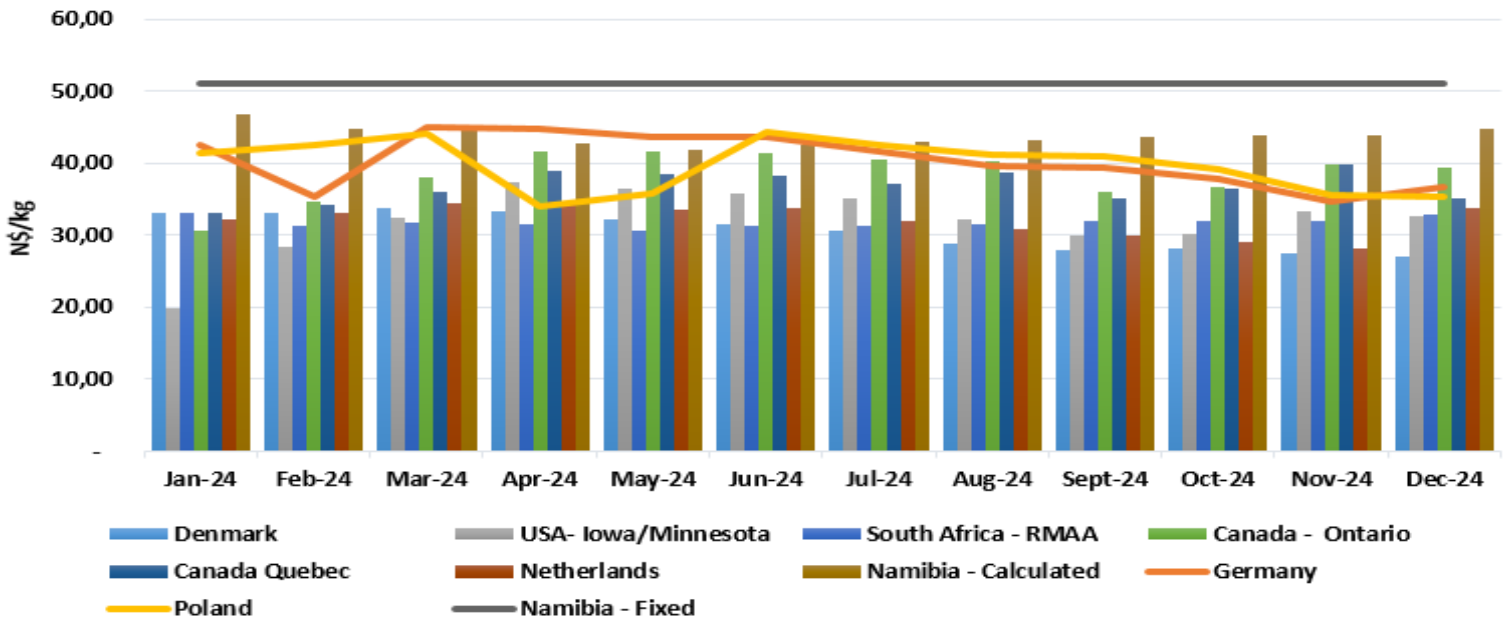
	Dec-24	% Δ m/m	% Δ y/y	Nov-24	Oct-24	Sept-24
Sunflower	10 371.47	-4.55	10.93	10 865.95	10 076.78	9 132.71
Soya Beans	9 093.38	0.73	-3.27	9 027.86	8 661.87	8 529.62

Disclaimer: All statements regarding future events reflect the Livestock and Livestock Products Board's views, and are not a guarantee of future performance or developments.

# Pork Monthly Market Watch



**Average Int. Producer Carcass Price Comparison -N\$/kg**



## NAMIBIA PORK TRADE SNAPSHOT

YTD 2024

**6 702 204**  
Import Volume (kg)

**5** Top import Countries  
 South Africa (56.47%)  
 Spain (18.82%)  
 Germany (14.12%)  
 Botswana (3.53%)  
 China (2.35%)

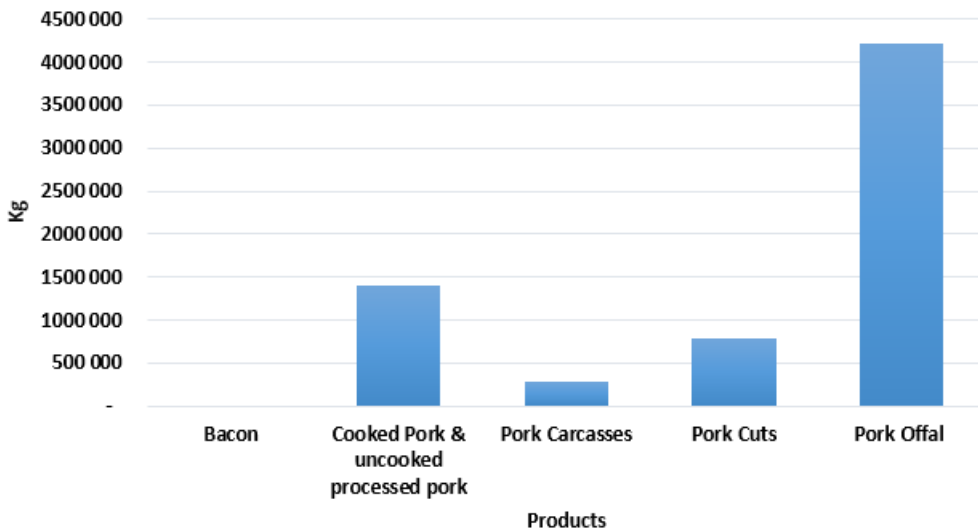
**51 597**  
Export Volume (kg)

**2**  
Export Country

**Pork cuts**  
**44 390**

Top Product Exported (kgs)

**YTD Pork Imports by Product Type**



Imports of pork carcasses increased by 68.39%, from 16 951 kg imported in November 2024 to 28 543 kg during the period under review. Processed pork products (cooked & uncooked), recorded an increase of 1.56% on a month-to-month basis.

During the period January to December 2024, 63% of total pork imports comprised of pork offal, followed by cooked pork & uncooked processed pork which accounted for 21%, pork cuts at 12%, while pork carcasses accounted for 4%.

Disclaimer: All statements regarding future events reflect the Livestock and Livestock Products Board's views, and are not a guarantee of future performance or developments.