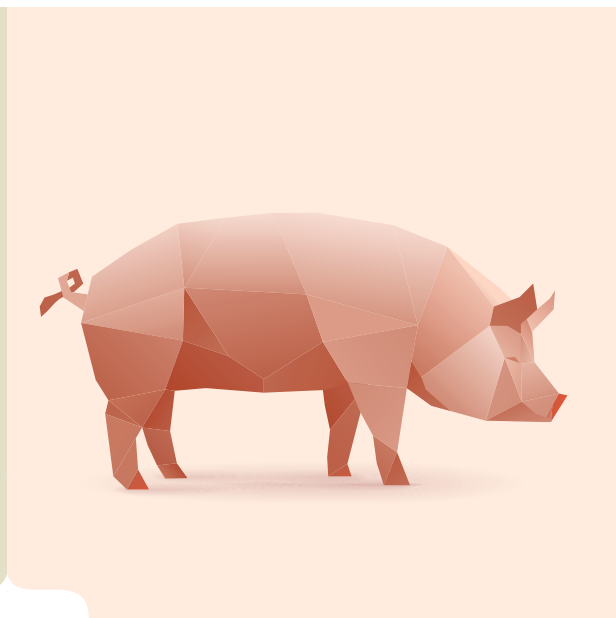
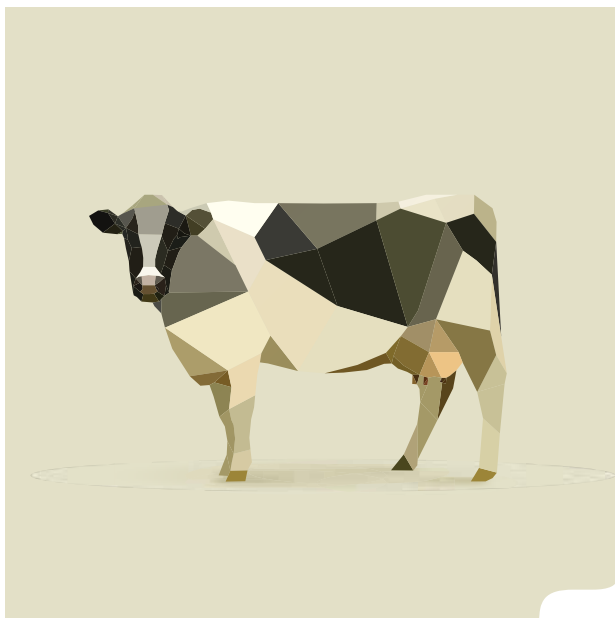





Meat Board of Namibia


Since 1935



ANNUAL
2014/15
REPORT



THE VISION OF THE MEAT BOARD OF
NAMIBIA IS TO BE AN INTERNATIONALLY
RECOGNISED ORGANISATION THAT
PROMOTES A PROFITABLE VIBRANT
QUALITY-DRIVEN NAMIBIAN
MEAT INDUSTRY IN LOCAL AND
INTERNATIONAL MARKETS.



MEAT BOARD OF NAMIBIA



P O Box 38 WINDHOEK Namibia
Tel: +264 61 275 830 | Fax: +264 61 228 310
Email: info@nammic.com.na
www.nammic.com.na



TABLE OF CONTENTS

REPORT OF THE CHAIRPERSON OF THE MEAT BOARD OF NAMIBIA (2014-2015)	5
INTERNAL FACTORS AFFECTING LIVESTOCK SALES	5
SOUTH AFRICAN TEMPORARY HOLD ON NAMIBIAN LIVESTOCK EXPORTS	5
POSSIBLE FUTURE SOUTH AFRICAN RESTRICTIONS	6
SADC-EUROPEAN UNION (EU) ECONOMIC PARTNERSHIP AGREEMENT	7
SHARED VISION FOR THE NAMIBIAN MEAT INDUSTRY	7
ISO ACCREDITATION OF THE FARM ASSURED NAMIBIAN MEAT SCHEME	8
ANIMAL DISEASE AND FOOD SAFETY RISKS ASSOCIATED WITH THE ZAMBEZI REGION	8
EXPORT OPPORTUNITIES FOR BEEF PRODUCTS FROM THE ZAMBEZI REGION	8
GROWTH AT HOME PROJECTS TO BOLSTER INTERNATIONAL TRADE IN MEAT PRODUCTS	9
LIAISON WITH GOVERNMENT AND ROLE PLAYERS IN THE MEAT INDUSTRY	9
ULTRASONIC SCANNING AND MEASURING BODY TRAITS IN LIVE ANIMALS	10
STRATEGIC FOCUSES FOR THE YEAR AHEAD	10
MEAT INDUSTRY PERFORMANCE IN 2014	13
BEEF SECTOR	13
SMALL STOCK SECTOR	14
PORK	16
CONCLUSION	16
STATISTICS CONTENTS	17

{ THE BOARD MEMBERS }



BOARD MEMBERS

Front row: Dr A Norval (Vice-Chairperson), Patricia Gurubes (Chairperson), Innocent Mahoto.

Back L-R: Magdalena Jesaja, (Sitting) Katrina Shiningayamwe, Cyprianus Khaiseg, Dr Diana van Schalkwyk, Amon Kapi, Paul Strydom (General Manager), Floris van Niekerk, Estelle Pienaar, Issaskar Mater, Maria Haingura, (Sitting) Babette Stöck.



REPORT OF THE CHAIRPERSON OF THE MEAT BOARD OF NAMIBIA (2014-2015)

Honourable Minister

It is indeed a privilege and an honour to submit the report of the Chairperson of the Meat Board of Namibia for the period 1 April 2014 to 31 March 2015.

Sales of cattle sheep and goats have continued to decrease annually despite normal rainfall in most parts of the country. There is no scientific evidence of the factors contributing to this but expert opinion reasons that the environment is no longer conducive to livestock farming.

INTERNAL FACTORS AFFECTING LIVESTOCK SALES

These informed opinions mention various contributory factors. These include the non-profitability of livestock farming due to high input costs low producer prices and inefficient policies. In order to assist the Government in addressing these restraining factors the Meat Board deems it prudent to research the macro- and micro- economic factors influencing livestock and meat production in the country. We hope to work side-by-side with Government in order for this research to be a success.

Unexpected challenges continue to bedevil the Namibian livestock and meat industry. These challenges place additional demands on the Meat Board as we strive to deliver on its mission. Our mission is to foster an environment conducive to sustainable livestock production and to encourage growth and diversification in the livestock meat and meat product markets.

SOUTH AFRICAN TEMPORARY HOLD ON NAMIBIAN LIVESTOCK EXPORTS

On 1 May 2014 South African veterinary authorities imposed stringent new conditions on the import of livestock from Namibia to South Africa. Livestock exports stalled until the South African Minister of Agriculture Forestry and Fisheries reopened the borders on 26 August 2015. This was after successful litigation by the South African Feedlot Association.

If we had complied with the new South African livestock import conditions this would have cost the Namibian meat industry approximately N\$760 million. As it was Namibian livestock producers lost N\$63 million during the embargo as no livestock exports could take place.

The Meat Board and the Namibian meat industry learned a few lessons from the South African intervention. We particularly realised that relying on the South African market is a fragile solution meaning that we should seek alternative export markets for Namibian cattle sheep and goats.

The meat industry and the Meat Board developed counter measures to deal with any future livestock import conditions that South Africa may impose based on this newly acquired knowledge.

- a. There was no change to our animal-disease risk profile prior to South Africa's announcement of new livestock import conditions. Namibia could therefore have challenged them before the Sanitary and Phyto-sanitary Committee of the World Trade Organisation (WTO) and the International Animal Health Organisation (OIE) of which both countries are signatories.

South Africa's new livestock import conditions also did not distinguish between Namibian livestock intended for slaughter and livestock destined for farming. This is an OIE recommendation contained in the Animal Health Terrestrial Code.

Furthermore South Africa imposed conditions on importing countries that are not applicable to (or enforced) in the recipient country. This is inconsistent with the WTO's Sanitary and Phytosanitary (SPS) agreement.

- b. The Meat Board - in conjunction with the Directorate of Veterinary Services and the meat industry - is developing countermeasures to deal with any possible new conditions South Africa may announce in future. This involves preparing dossiers for submission to the OIE requesting disease-free recognition in respect of PPR CBPP and BSE as well as implementing protocols for tuberculosis and brucellosis eradication south of the Veterinary Cordon Fence.
- c. We searched for new markets for the Namibian meat industry especially with regard to recently weaned animals and goats. In the event that the South African option becomes financial unfeasible, Meat Board researchers found potential markets in Saudi Arabia and Angola.

Raising weaners in feedlots to prepare them for slaughter is financially unviable in Namibia due to high feeding costs. Finding alternative markets for weaners proved to be a challenge and we turned our attention to developing alternative solutions locally.

The Meat Board used the Omutambu Maowe Quarantine Farm as a demonstration unit for weaner production. We also investigated irrigated pasture finishing under quarantine conditions in the Zambezi Region. If these initiatives prove feasible we may use other redundant quarantine farms and suitable locations in the same way.

POSSIBLE FUTURE SOUTH AFRICAN RESTRICTIONS

As opposed to from a herd protection perspective South Africa may impose stringent new livestock import conditions in future to concede to pressure from industry constituencies. The Meat Board guarded against this possibility by creating permits allowing livestock export to specific South African destinations.

These permits enable us to ship to abattoirs and feedlots only preventing the animals from ending up on farmland and ‘threatening the disease status of the South African herd’. These permits should also help South Africa verify that Namibian consignments will arrive in South African feedlots and abattoirs per import requirements. I am pleased to announce that the Meat Board is managing this situation with huge success.

I now wish to present some of the important achievements of the Meat Board:

SADC-EUROPEAN UNION (EU) ECONOMIC PARTNERSHIP AGREEMENT

After years of negotiation we endorsed the SADC-European Union (EU) Economic Partnership Agreement on 15 July 2014 bringing enormous relief to the Namibian meat industry. Until then we had been at risk of removal from the EU’s Market Access Regulation schedule. This agreement makes provision for duty-and quota-free market access to the European Union.

With confirmation of the EU as one of Namibia’s major export markets for beef Namibia can continue to enjoy duty- and quota-free access to the EU market. The meat industry should however not become complacent; it should in particular continue its efforts to find alternative markets for meat products.

During the negotiations the Meat Board provided reports submissions and information to ministries and negotiators. These proved the advantages of continued preferential access to the EU market. I hereby express my appreciation to the negotiators for concluding a positive outcome for the Namibian meat industry.

SHARED VISION FOR THE NAMIBIAN MEAT INDUSTRY

The contribution of the livestock and meat industry to Namibia’s gross domestic product is diminishing. Stakeholders and sectors are at various levels of development and often have different interests when it comes to achieving economic growth.

The Meat Board established an industry-wide forum to coordinate stakeholders and focus on overall industry planning. This was instrumental in the development of a common vision and a shared plan aimed at motivating members through greater participation in growing the sector.



The Minister of Agriculture Water and Forestry Honourable John Mutorwa launched this Common Vision on 19 February 2015. The Meat Board - with the support of national representative bodies - will act as coordinator of the Common Vision oversee its implementation and report on its progress to the forum twice a year.

ISO ACCREDITATION OF THE FARM ASSURED NAMIBIAN MEAT SCHEME

The Farm Assured Namibian Meat Scheme, known as FANMeat, celebrated its 15th anniversary on 26 September 2014. The meat industry identified the need for the scheme in the late 1990's following and increased awareness among consumers and traders with regard to meat safety as well as animal welfare and on-farm management standards.

The Meat Board is the custodian of the livestock and meat industry. In this capacity it developed and continued to manage the FANMeat assurance program during the year under review. This program highlights the importance of sound production practices and promotes acceptance of our product among consumers.

The Ministry of Agriculture Water and Forestry gazetted the national FANMeat Scheme in 1999. The Meat Board and stakeholders put tremendous effort into researching and implementing international standards regarding animal welfare. We followed through with animal welfare promotion / education and communication of these standards in general in the period that followed.



The FANMeat scheme received ISO accreditation early in 2015 based on an international assessment of its standards as set out in the FANMeat manual. This is an outstanding achievement in the history of the Meat Board. With such enhanced reliability FANMeat is the mark of integrity for Namibian export meat.

The FANMeat office is currently implementing the ISO 9001 quality management system. This requires transporters auctioneers livestock agents animal feed producers suppliers and abattoirs to register as members of the FANMeat Scheme and to pledge adherence to the legal requirements of FANMeat standards. To the management and staff of the FANMeat division I thank

you very much for your efforts. This is indeed a huge milestone.

ANIMAL DISEASE AND FOOD SAFETY RISKS ASSOCIATED WITH THE ZAMBEZI REGION

International acceptance of trade in fresh beef is less likely if cattle from a foot-and-mouth disease infected zone such as the Zambezi Region is involved. This is due to a potential risk of introducing the foot-and-mouth disease (FMD) virus. Most high-value markets prefer sourcing beef from countries or zones with an accredited FMD-free status.

The Meat Board pressed on with the implementation of the project we call our Development of Export Opportunities for Beef Products from the Zambezi Region. The Millennium Challenge Account of Namibia funded this with a view to broaden export opportunities for beef products from the Zambezi Region.

EXPORT OPPORTUNITIES FOR BEEF PRODUCTS FROM THE ZAMBEZI REGION

The aforementioned project received international recognition for its contribution to scientific integrated and value-chain risk management. It addressed animal disease and food safety risks associated with beef

production in the Zambezi Region and piloted the process. Results obtained indicate that beef produced in the region under specific quality control measures is safe and poses negligible risk to importing countries.

The Meat Board presented this study to the SADC Livestock Committee in Gaborone in June 2014 in order to strengthen Namibia's case for improving market access for beef produced in the Zambezi Region. We are greatly encouraged by the SADC Livestock Committee's acceptance of our proposals and its resolve to prepare a submission to the World Organization for Animal Health (OIE). It is worth noting that the OIE is in the process of reviewing its chapter on foot-and-mouth disease.

We are confident our authorities will underwrite this positive outcome of research conducted by the Meat Board. We hope that importers will increase their orders for safe Namibian beef and that this will form part of an overall effort to assist producers in the Zambezi Region.

GROWTH AT HOME PROJECTS TO BOLSTER INTERNATIONAL TRADE IN MEAT PRODUCTS

Acting on advice by the Minister of Trade and Industry the Meat Board continued to support Government through the administration of Growth at Home projects such as the management of pork and poultry imports and the export of sheepskins.

The Minister acted on our advice and increased the poultry import quota to 1 600 tons per month. This increase enabled us to manage the availability of poultry products in the trade without compromising local producers and importers. It also ensured the availability of sufficient poultry products on retail shelves.

The Pork Market Promotion Scheme's objective is to promote locally produced pork and to protect the local industry against imported low-priced pork meat and products. This is done through a ratio of locally purchased products versus imports expressed by kilograms and according to the time of year. The Meat



Board pork producers and importers developed these structures in the pork industry to grow their business.

The Meat Board continued to control exports of sheepskins through a bidding system. In terms of this farmers must first offer skins to local producers with a view to adding value before they export. Should there be no local interest or should the skins command a higher international price then these consignments are available for

export. The Board provided assessors who are skilled in determining the exact value of sheepskins in accordance to a national grading standard.

LIAISON WITH GOVERNMENT AND ROLE PLAYERS IN THE MEAT INDUSTRY

The Board continued to market its role in the meat industry. The chair and the general manager visited His Excellency, President Hifikepunye Pohamba, at the State House. We used this opportunity to share the impact of South African import conditions on the Namibian meat market the role of the Meat Board and possible alternative markets for Namibia's meat.

The Meat Board also promoted the important role it plays at functions trade fairs agricultural shows and conferences. Our staff members attended these events both within a communal and commercial contexts and this increases our visibility and presence.



Paul Strydom, Tim Noakes and Magda van Schoor.

An exercise and sports physician at the University of Cape Town, Tim Noakes, created quite a stir with his book titled: *The Real Meal Revolution*. This book promotes a high fat, low-carbohydrate diet with emphasis on meat aimed at communities in Namibia and South Africa. The Meat Board sponsored his presentation at the Namibia Agricultural Union Outlook Conference in October 2014.

ULTRASONIC SCANNING AND MEASURING BODY TRAITS IN LIVE ANIMALS

There is an increasing international emphasis on meat quality. The ultrasonic scanning of live animals helps to identify those animals with physical properties that could improve the quality of the national herd. The Australian-based Breedplan is a modern genetic evaluation system for beef cattle breeders and has clients worldwide.

Mr Petrus Maritz - who is head of Classification Services at the Meat Board - received accreditation as a Breedplan ultrasonic scanner after he attended a scanning accreditation seminar in Armidale Australia from 17 to 21 November 2014. This makes him the only accredited Breedplan ultrasonic scanner in Africa. Nineteen Australians seven Britons and one New Zealander also attended the program.

STRATEGIC FOCUSES FOR THE YEAR AHEAD

a. Sanitary and Phyto-Sanitary Agreements with Lucrative Markets

The complexity and uncertainty surrounding the conclusion of the SADC EU EPA agreement emphasised that the Namibian meat industry must have a variety of alternative markets on standby. The Meat Board and the meat industry identified several profitable options. The Directorate of Veterinary Services should conclude sanitary and phyto-sanitary agreements with United States of America China Russia and Hong Kong as soon as possible.

The most lucrative meat markets in the world have the most stringent sanitary and phyto-sanitary controls and are therefore the most difficult to access – not that Namibia should have a problem with that!

b. Improved Market Access North of the Veterinary Cordon Fence

The demand for meat is rising worldwide. Namibia needs to take advantage of this by producing larger volumes of meat especially north of the veterinary cordon fence.

We need to achieve internationally recognised foot-and-mouth disease-free status for this region whether with or without vaccination. Once we have achieved this objective - which has long been overdue - market development can start in all earnest.

The Board continued to promote the Livestock Producer Forum's Northern Communal Areas Farmers Mentorship programme. This project aims to improve market access for livestock producers north of the Veterinary Cordon Fence.

Mentoring makes an invaluable contribution to market-related cattle production. A fair amount of producers agricultural / animal health technicians of the Ministry of Agriculture Water and Forestry attend these sessions. We are working with the Directorate of Extension and Engineering Services to coordinate activities.

c. Elimination of Levies on Export of Sheep and Sheep Products

The Meat Board's sheep marketing scheme continues to create discontent in the industry. Sheep export abattoirs complain that they cannot obtain sheep for slaughter and sheep producers protest about the low prices offered by abattoirs. They therefore rather export sheep to South Africa where higher prices are paid.

The common denominator is that local sheep slaughter is no longer financially viable for either producer or abattoir in Namibia. We should abolish the 60% levy on sheepskin exports to help the sheep industry recover and put other restrictions on the export of sheep and sheep products.

Marketing of sheep is diminishing at an alarming rate. The Meat Board is deeply concerned about the sustainability of the Namibian sheep sector.

d. Financial Viability of the Namibian Meat Board

The Meat Board should be able to finance itself in a sustainable manner especially as we deliver most of our services on a cost-recovery basis. In this regard it is pertinent to note that the Honourable Minister has not yet gazetted the Meat Board's general levies classification levies and stock brand administration fees.

Meat Board activities have increased dramatically over the past few years resulting in increased expenditure. We had to reduce our services when our current levy income proved inadequate to cover all our expenses. The Board's Audit and Risk Committee - plus an independent auditor and the Auditor-General – continuously evaluate our books to ensure that the Meat Board can account for all expenses.

e. Ongoing Emphasis on Cost-Efficiency of Operations

The Meat Board continuously strives to improve cost efficiency as a strategic objective. We have developed a cost-efficient organisational structure. We will however to continue to seek synergies and ensure that they align with the Meat Board's strategic plan.

We commissioned a joint border control services division to increase our surveillance at all major official Namibia border points. This is to protect the viability of commodities under the jurisdiction of the Meat Board, i.e. livestock beef sheep meat poultry hides and skins.

f. Joint Training Program with Directorate of Veterinary Services

The Meat Board in conjunction with the Directorate of Veterinary Services (DVS), provided training to improve service delivery to producers and other stakeholders. The DVS organised a few NamLITS courses for state veterinarians animal health technicians and DVS clerical staff while staff from the Meat Board's stock brands office and ear tag office assisted with presentations.

We have linked all databases including the NamLITS livestock identification and traceability system the stock brand database and the ear tag ordering system. The Meat Board and the Directorate of Veterinary Services staff are familiar with the range of functions. The Board is also administering a NamLITS helpdesk and data capture unit to assist livestock producers in updating their herds and register movements.

The Honourable Minister of Agriculture Water and Forestry inaugurated the new Meat Board on 1 February 2014. It took time to familiarise ourselves with the activities of the Board and the meat industry in general and to function as a coherent unit. I thank management for their efforts in assisting with this process. The trouble taken with induction training and informing does not go unnoticed and will deliver the necessary dividends in years to come. The Meat Board has a strategic plan in place that we will follow meticulously as we strive to achieve our vision and our mission.

Acknowledgement

Thank you for the trust you put in the Board and I to manage the affairs of the Namibian meat industry. I would like to thank all Board members for working together and commend all staff for their hard work during the past financial year.

PATRICIA GURUBES
CHAIRPERSON
MEAT BOARD OF NAMIBIA

MEAT INDUSTRY PERFORMANCE IN 2014

BEEF SECTOR

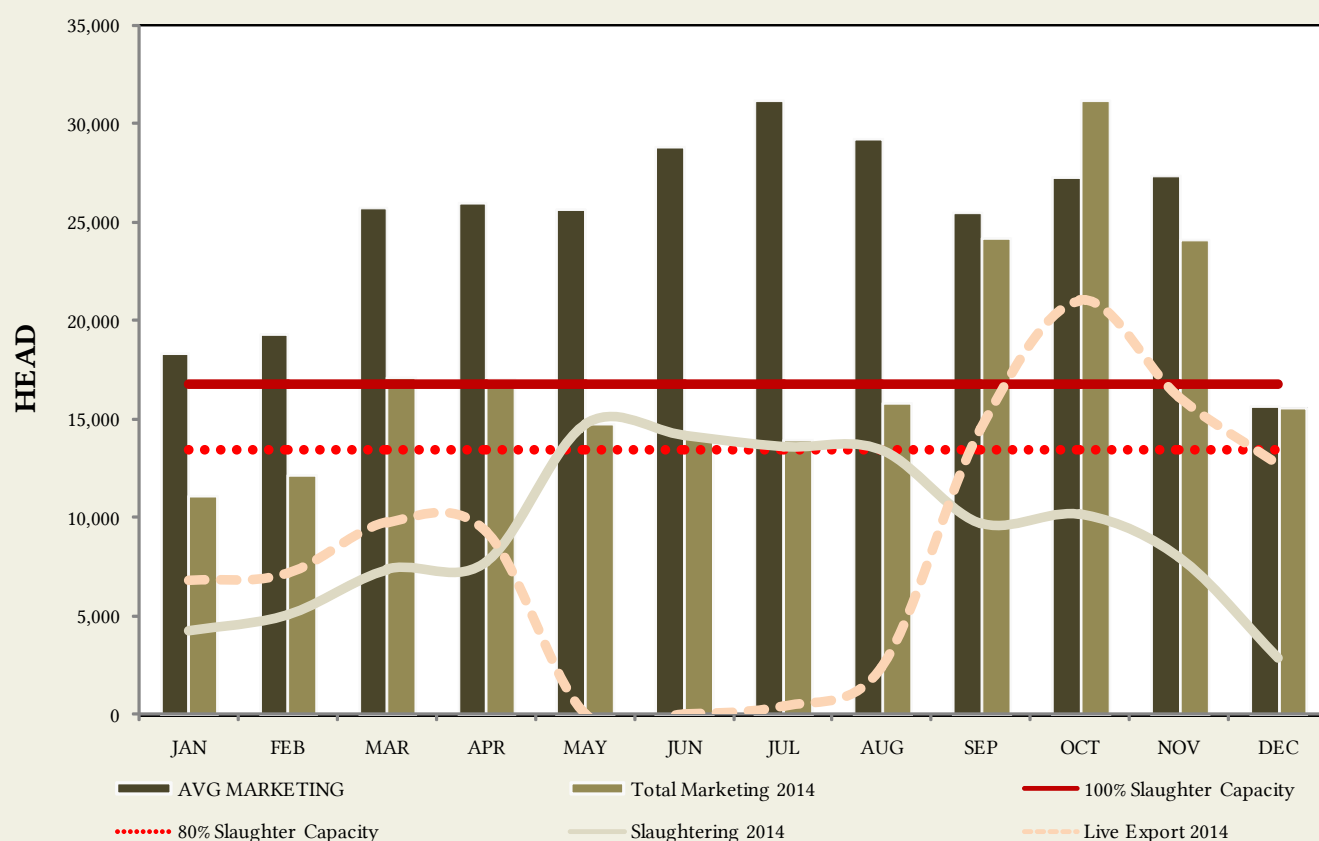
MARKETING OF CATTLE

The total of the cattle marketed by the end of 2014 stood at a level of 240 929 livestock units. The overall performance of cattle marketed decreased by 43% compared to cattle marketed by the end of 2013 which stood at a level of 425 388 livestock units. Total live exports of cattle made up 41.6% of the total marketed whilst the cattle slaughtered at export abattoirs accounted for 46.11%. Cattle slaughtered at the NCA export abattoirs and butchers accounted for 3% and 8.9% respectively.

SLAUGHTERING OF CATTLE AT EXPORT ABATTOIRS

A total number of 111 101 cattle units were slaughtered at export abattoirs in 2014. This represents a decrease of 4% compared to the 115 819 that was reported in 2013. Of the total cattle slaughtered 94% were slaughtered at the two Meatco plants (Windhoek and Okahandja). The average grades slaughtered were: 32.45% A-grade; 19.99% AB-grade; whereas the B and C grades accounted for up to 26.42% and 20.33% respectively. The average carcass mass measured for the reporting period was 231.76 kg per carcass unit a 2% decrease from the 2013 average carcass mass of 236.64kg.

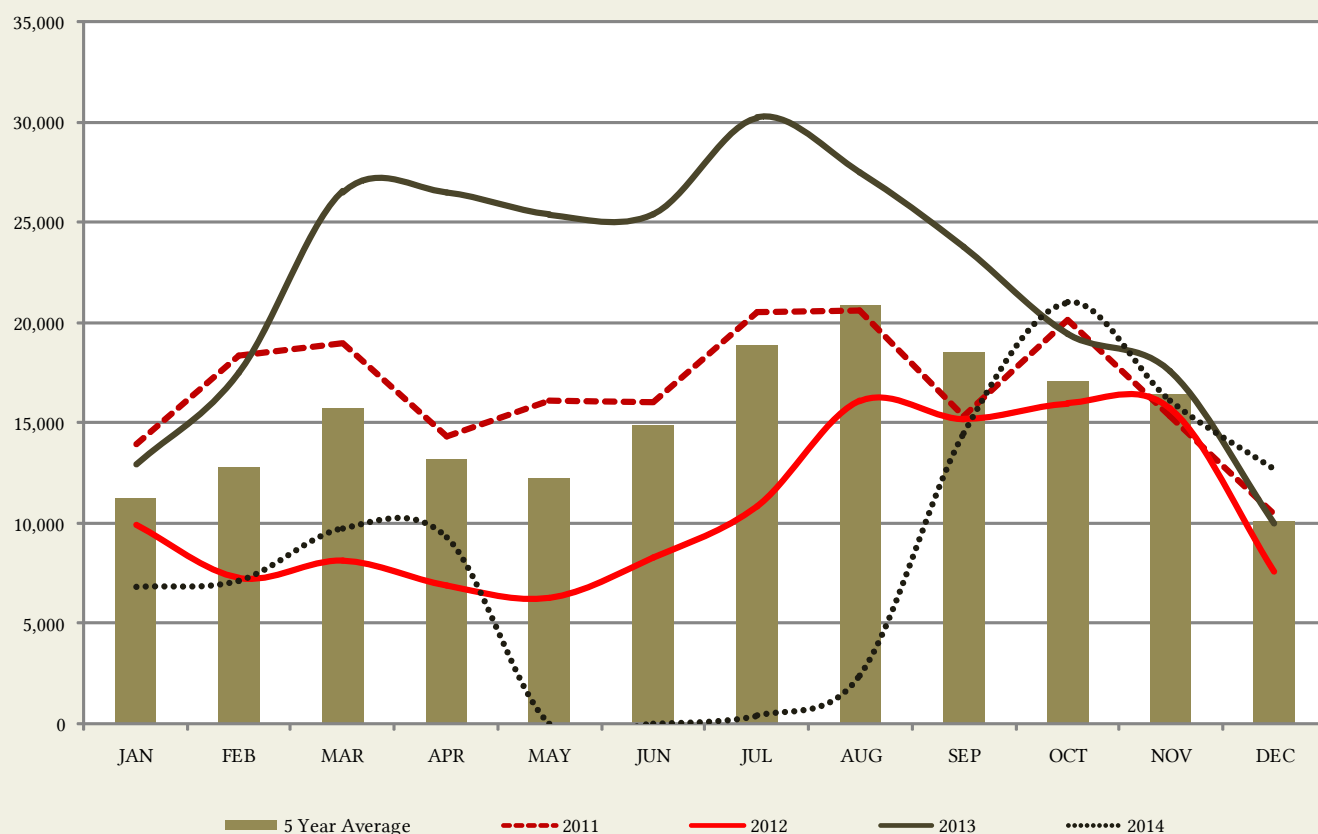
5 YEAR AVERAGE MONTHLY CATTLE MARKETING



A total of 9 380 tons of chilled and frozen deboned cuts were exported to the EU and Norwegian markets while a total of 7 487 tons were exported to African markets during the year 2014. A 16% decrease was observed compared to the total of 20 154 tons exported in 2013 - 10 229 tons to the EU/Norway and 9 925 tons to African markets.

EXPORTS OF LIVE CATTLE

The live export of cattle to South Africa decreased by 62% in 2014 to stand at 100 211 livestock units compared to the 262 929 livestock units exported in 2013.



PRODUCER PRICES FOR CATTLE AND BEEF

The average beef producer price traded at N\$29.04/kg at the end of 2014 and weaner prices closed at N\$17.69/kg. The prices of stores and slaughter cattle stood at N\$16.62/kg and N\$16.62/kg (live weight) respectively.

EXPORT OF LIVESTOCK TO ANGOLA

YEAR	CATTLE	SHEEP	GOATS	TOTAL
2013	8 239	610	27 093	35 942
2014	2 988	803	19 373	23 164

EXPORT OF LIVESTOCK TO ANGOLA

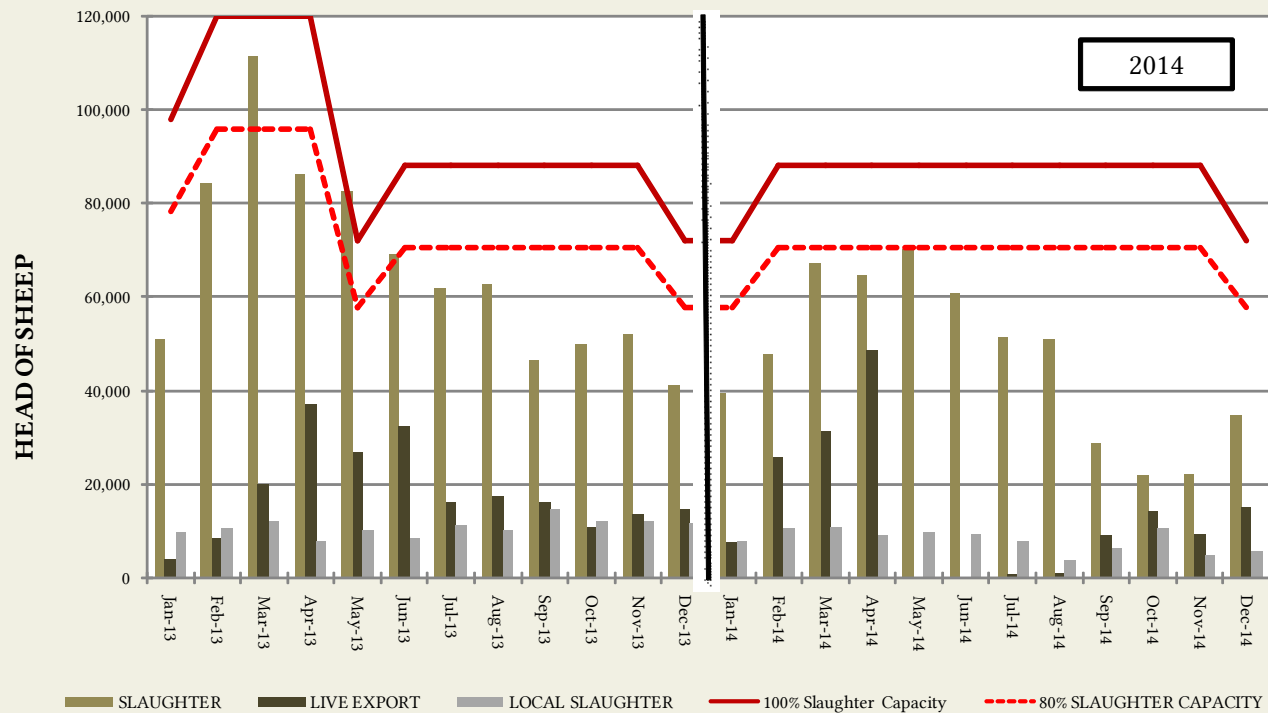
The table above depicts the quantity and type of livestock exported to Angola during the current reported period. It is evident from the table that there has been a decrease of 35.5% in the total export of livestock to Angola from 35 942 livestock units in 2013 to 23 164 in 2014.

SMALL STOCK SECTOR

The total of small stock marketed by the end of 2014 was 982 235. This indicates a 28% decrease compared to the small stock marketed in 2013 which stood at 1 356 548 livestock units.

SLAUGHTERING OF SHEEP AT EU/RSA APPROVED ABATTOIRS

A total of 559 160 sheep were slaughtered by the end of 2014 showing a 30% decrease in comparison to 2013 where a total of 798 963 heads of sheep were slaughtered.

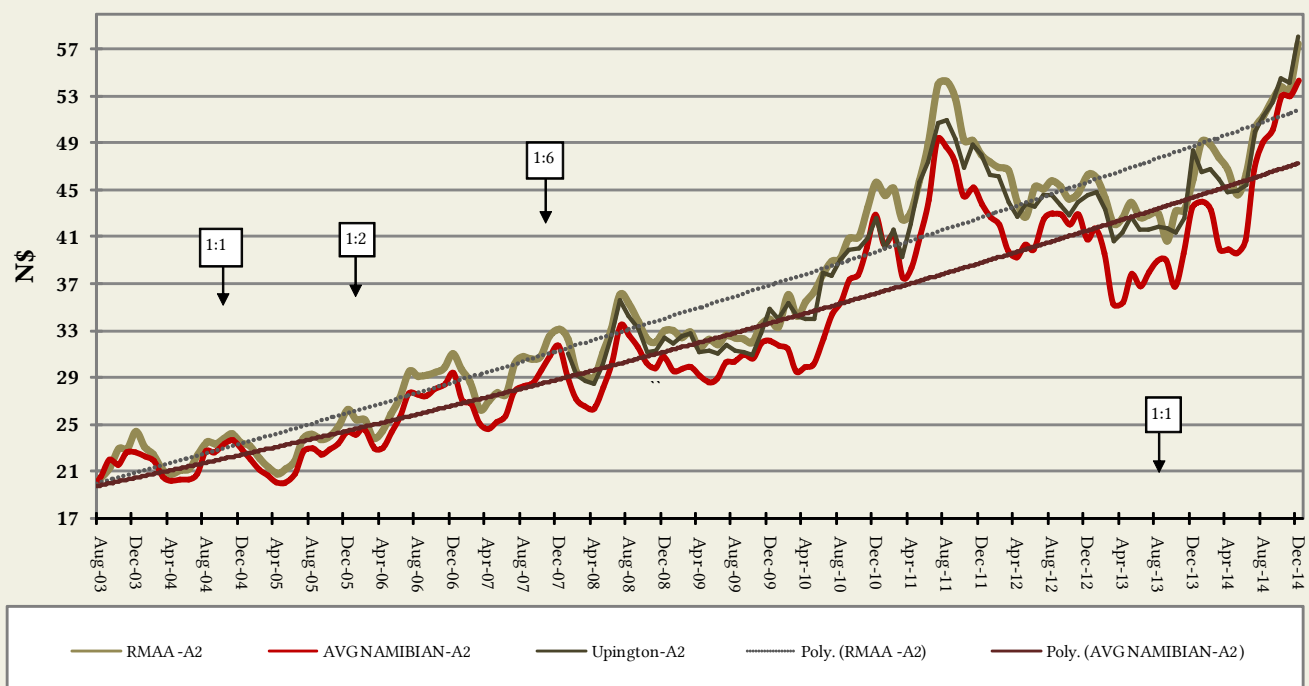


EXPORTS OF SMALL STOCK TO SOUTH AFRICA

Live exports of small stock decreased by 24% compared to those that were exported in 2013. A total of 326 221 livestock units were exported to South Africa in 2014 - this too shows a decrease compared to the 427 240 livestock units exported in 2013 over the same period. The total live exports made up 33.2% of the total market share whilst the sheep slaughtering made up 56.90% and the butchers 9.9% respectively.

PRODUCER PRICES FOR SMALL STOCK

The average sheep producer price for A2 in 2014 was N\$46.23/kg which depicts a 19% increase from N\$38.86/kg during the previous year. On the livestock auctions lamb traded on average for N\$18.53/kg (live weight) which is a 20% increase compared to the N\$15.49/kg in 2013.



Goats on average per head, fetched N\$431.33 for small goats (32kg) N\$656.79 for medium goats (32-45kg) and N\$1017.43 for large goats (45kg <).

PORK

The slaughtering of 40 932 pigs were reported in 2014 compared to the 39 149 pigs slaughtered in 2013. This shows an increase of 5% in the total number slaughtered. With regards to pork imports a total number of 2 734 tons were imported in 2014 compared to the 2 383 tons that were imported in 2013.

CONCLUSION

Livestock marketing in 2014 was significantly lower than that of 2013. The overall performance can be attributed to the fact that Namibia experienced a drought in 2013 in which the marketing of livestock was much higher than usual. Although 2014 was categorized by fairly good rains producers aimed at restocking their herds after the drought year this therefore resulted into a decreased marketing of livestock. Strict RSA import restrictions during the months of May - August 2014 also affected live exports.

STATISTICS CONTENTS

18	TOTAL MARKETING OF LIVESTOCK - (N)
20	EXPORT OF CATTLE TO ALL MARKET REGIONS
21	EXPORT OF SHEEP TO ALL MARKET REGIONS
22	EXPORT OF GOATS TO ALL MARKET REGIONS
23	EXPORT OF BEEF CARCASSES CUTS TINNED MEAT BY EXPORT ABATTOIRS (CARCASS UNITS)
24	EXPORT OF BEEF CARCASSES CUTS TINNED MEAT BY EXPORT ABATTOIRS (TONS)
25	EXPORT OF SMALL STOCK CARCASSES AND CUTS (CARCASS - UNITS)
26	EXPORT OF SMALL STOCK CARCASSES AND CUTS (CARCASS - TONS)
27	SEX OF CATTLE SLAUGHTERED AT EXPORT ABATTOIRS - (%)
27	CATTLE SLAUGHTERED AT VARIOUS ABATTOIR FACTORIES (INCLUDING NCA ABATTOIRS)
28	TYPE OF LIVE CATTLE TO RSA
30	GRADES OF BEEF CARCASSES AT EXPORT ABATTOIRS - (%)
31	AVERAGE BEEF CARCASS MASS AT EXPORT ABATTOIRS - (KG)
32	AVERAGE SHEEP CARCASS MASS AT EXPORT ABATTOIRS (DORPER) - (KG)
33	AVERAGE PRODUCER PRICE OF BEEF CARCASSES AT EXPORT ABATTOIRS (N\$/KG)
34	AVERAGE PRODUCER PRICE OF SHEEP (DORPER) CARCASSES AT NAMIBIAN EXPORT ABATTOIRS (N\$/KG)
35	AUCTIONS: AVERAGE PRICE
36	TOTAL MARKETING OF CATTLE - (N)
37	TOTAL MARKETING OF SMALL STOCK - (N)
38	LIVESTOCK SLAUGHTERED FOR LOCAL CONSUMPTION - (N)
39	AUDITOR GENERAL REPORT

TOTAL MARKETING OF LIVESTOCK - (N)

CATTLE	1992	1993	1994	1995	1996	1997	1998	1999	2000	2001	2002
EXPORT ABATTOIRS	154 643	166 609	162 672	156 381	170 707	88 879	126 824	159 522	140 589	142 624	149 833
N C A *	17 106	16 512	18 604	29 690	19 724	13 522	18 488	19 410	18 604	15 701	24 499
BUTCHERS	36 814	37 931	34 108	29 645	28 405	31 713	26 620	20 021	22 956	41 073	15 654
LIVE EXPORTS	157 071	179 648	190 660	198 773	279 127	92 661	148 739	152 416	79 969	110 127	148 350
TOTAL	365 634	400 700	406 044	414 489	497 963	226 775	320 671	351 369	262 118	309 525	338 336
SMALL STOCK	1992	1993	1994	1995	1996	1997	1998	1999	2000	2001	2002
EXPORT ABATTOIRS	147 333	102 319	115 290	52 907	2 198	0	2 552	236 919	214 754	254 966	318 713
BUTCHERS	152 492	118 231	96 481	121 829	128 522	87 714	105 213	196 670	192 795	153 706	45 414
LIVE EXPORTS	1 045 809	817 608	888 410	1 008 662	928 714	865 951	1 086 320	908 153	755 363	965 713	1 149 149
TOTAL	1 345 634	1 038 158	1 100 181	1 183 398	1 059 434	953 665	1 194 085	1 341 742	1 162 912	1 374 385	1 513 276
**PIGS	1992	1993	1994	1995	1996	1997	1998	1999	2000	2001	2002
MEATCO	-	-	-	-	-	-	-	-	1 374	585	675
BUTCHERS	33 372	30 212	34 577	33 111	31 575	26 534	9 331	6 391	3 311	1 464	860
TOTAL	33 372	30 212	34 577	33 111	31 575	26 534	9 331	6 391	4 685	2 049	1 535

2003	2004	2005	2006	2007	2008	2009	2010	2011	2012	2013	2014	2014%	AVG
143 885	139 162	141 348	111 821	115 460	129 622	130 035	127 141	112 602	102 980	115 819	111 101	46 11	134 794
17 776	9 401	16 283	21 170	18 881	9 798	7 876	15 704	18 757	9 581	13 217	8 019	3 33	16 449
9 950	9 191	8 477	12 016	10 893	10 923	9 210	15 866	20 825	23 910	33 423	21 598	8 96	22 227
150 601	144 573	210 945	172 790	172 587	129 862	133 156	198 816	204 858	128 493	262 929	100 211	41 59	162 929
322 212	302 327	377 053	317 797	317 821	280 205	280 277	357 527	357 042	264 964	425 388	240 929	100	336 399
2003	2004	2005	2006	2007	2008	2009	2010	2011	2012	2013	2014	2014%	AVG
366 454	435 676	772 422	725 558	856 438	762 647	865 758	842 559	742 986	768 522	798 963	559 160	56 93	432 395
23 155	38 427	23 715	74 101	83 044	76 818	85 946	77 137	65 475	76 311	130 345	96 854	9 86	97 843
1 123 102	756 464	546 103	535 121	458 454	301 196	332 914	369 957	337 971	314 648	427 240	326 221	33 21	706 489
1 512 711	1 230 567	1 342 240	1 334 780	1 397 936	1 140 661	1 284 618	1 289 653	1 146 432	1 159 481	1 356 548	982 235	100	1 236 727
2003	2004	2005	2006	2007	2008	2009	2010	2011	2012	2013	2014	2014%	AVG
6 595	9 600	14 295	14 754	17 233	16 104								9 024
2 954	10 475	6 442	6 986	11 916	11 521	27 526	43 910	21 646	35 910	39 149	42 656	100 00	20 514
9 549	20 075	20 737	21 740	29 149	27 625	27 526	43 910	21 646	35 910	39 149	42 656	100	24 045

* NCA = Northern Communal Areas

** Live Imports From RSA Included

EXPORT OF CATTLE TO ALL MARKET REGIONS

MONTHS	FREE STATE	GHANZI	HARARE	LUANDA	GAUTENG	KWAZULU NATAL	BENGUELA	CUANZA SUL	KUNENE	LUBANGO	WESTERN CAPE	TOTAL 2014
1	0	0	0	92	6 570	82	0	0	41	48	0	6 832
2	0	0	0	173	6 938	32	0	0	0	0	0	7 143
3	0	4	0	45	9 400	283	34	0	0	0	0	9 766
4	0	0	0	223	8 596	367	38	19	0	0	81	9 325
5	0	0	0	0	0	0	0	0	0	0	0	0
6	0	0	0	0	0	0	0	0	0	0	0	0
7	0	1	0	21	231	0	64	0	108	10	0	435
8	2	0	0	150	2 177	0	0	42	22	0	0	2 394
9	148	0	0	64	13 304	786	0	0	0	187	0	14 488
10	423	1	0	186	18 894	1 459	0	0	0	38	21	21 023
11	1154	6	0	317	13 289	606	364	0	362	18	0	16 116
12	847	0	0	26	11 221	0	87	4	261	243	0	12 689
TOTAL 2014	2 574	13	0	1 297	90 621	3 614	587	65	795	544	102	100 211
%	2.57%	0.01%	0.00%	1.29%	90.43%	3.61%	0.59%	0.07%	0.79%	0.54%	0.10%	100%
TOTAL 2013	0	0	212	6 151	242 102	11 171	200	330	1 774	414	452	262 806
%	0%	0%	0.1%	2.3%	92.1%	4.3%	0.1%	0.1%	0.7%	0.2%	0.2%	100%

EXPORT OF SHEEP TO ALL MARKET REGIONS

MONTHS	FREE STATE	GHANZI	HARARE	LUANDA	GAUTENG	KWAZULU NATAL	BENGUELA	CUANZA SUL	KUNENE	LUBANGO	WESTERN CAPE	TOTAL 2014
1	0	0	0	23	5 218	2 149	0	0	24	28	0	7 443
2	0	0	0	155	25 661	30	0	0	0	0	0	25 846
3	0	5	2	2198	28 923	309	35	0	0	0	0	31 472
4	0	0	0	1623	46 466	375	39	20	0	0	104	48 627
5	0	0	0	0	1	4	0	0	0	0	0	5
6	0	0	3	1	69	125	2	0	0	1	0	200
7	0	4	0	6	61	648	9	0	2	1	0	731
8	0	2	3	93	34	734	0	9	4	0	0	880
9	176	1	0	1305	6 471	933	0	0	0	222	0	9 107
10	352	26	0	155	12 404	1 212	0	0	0	32	17	14 196
11	665	51	0	882	6 828	349	210	68	209	10	0	9 273
12	479	0	0	15	8 294	5 752	49	2	228	58	0	14 876
TOTAL 2014	1671	89	7	6 456	140 430	12 619	344	99	467	352	121	162 656
%	1.03%	0.05%	0.005%	3.97%	86.34%	7.76%	0.21%	0.06%	0.29%	0.22%	0.07%	100%
TOTAL 2013	0	0	262	26 497	113 604	73 129	679	252	1 257	285	1 280	217 245
	0%	0%	0.1%	12.2%	52.3%	33.7%	0.3%	0.1%	0.6%	0.1%	0.6%	100%

EXPORT OF GOATS TO ALL MARKET REGIONS

MONTHS	FREE STATE	GHANZI	HARARE	LUANDA	GAUTENG	KWAZULU NATAL	BENGUELA	CUANZA SUL	KUNENE	LUBANGO	WESTERN CAPE	TOTAL 2014
1	0	0	0	87	6 026	3 417	0	0	39	45	0	9 613
2	0	0	0	161	6 421	3 891	0	0	0	0	0	10 472
3	0	12	5	116	14 921	735	28	0	0	0	0	15 816
4	0	0	0	2371	16 782	548	57	29	0	0	153	19 939
5	0	0	0	184	527	2 309	114	0	43	36	0	3 213
6	0	0	142	966	3 556	6 441	86	0	0	32	0	11 224
7	0	1	0	758	4 551	8 577	117	0	26	43	0	14 074
8	0	5	35	1204	6 778	9 475	0	120	54	0	0	17 671
9	342	0	0	147	17 167	1 818	0	0	0	432	0	19 907
10	529	38	0	232	12 130	1 821	0	0	0	48	26	14 824
11	857	4	0	1137	2 833	450	303	87	269	13	0	5 955
12	760	0	0	505	10 078	9 139	78	4	234	58	0	20 857
TOTAL 2014	2488	61	182	7 869	101 771	48 620	782	240	666	708	179	163 565
%	1.52%	0.04%	0.11%	4.81%	62.22%	29.73%	0.48%	0.15%	0.41%	0.43%	0.11%	100%
TOTAL 2013	0	0	98	14 128	152 264	41 738	367	131	791	224	253	209 994
%	0%	0%	0.0%	6.7%	72.5%	19.9%	0.2%	0.1%	0.4%	0.1%	0.1%	100%

EXPORT OF BEEF CARCASSES CUTS TINNED MEAT BY EXPORT ABATTOIRS (CARCASS UNITS)

MONTHS	AFRICAN MARKETS*			OVERSEAS			OTHER	GRAND TOTAL		
	CAR-CASS/ CUTS	TINNED	TOTAL	CUTS	TINNED	TOTAL	CUTS	CAR-CASS/ CUTS	TINNED	TOTAL
1	1 274	1 019	2 293	3 027	0	3 027	74	4 375	1 019	5 394
2	807	1 147	1 954	1 853	0	1 853	74	2 734	1 147	3 881
3	1 328	1 019	2 347	2 447	0	2 447	62	3 838	1 019	4 857
4	1 498	1 275	2 772	2 603	0	2 603	113	4 214	1 275	5 489
5	3 306	1 531	4 837	4 258	0	4 258	0	7 564	1 531	9 095
6	3 745	891	4 636	5 300	0	5 300	86	9 131	891	10 022
7	4 146	1 398	5 544	6 584	0	6 584	189	10 920	1 398	12 318
8	4 150	1 242	5 392	5 079	0	5 079	204	9 433	1 242	10 675
9	3 577	1 147	4 723	4 376	0	4 376	137	8 089	1 147	9 236
10	2 868	1 398	4 266	4 400	0	4 400	0	7 268	1 398	8 666
11	2 978	1 398	4 376	2 943	0	2 943	137	6 059	1 398	7 457
12	1 264	891	2 155	1 583	0	1 583	177	3 023	891	3 914
2014	30 940	14 355	45 296	44 456	0	44 456	1 253	76 648	14 355	91 004
%	68%	32%	100%	100%	0%	100%	100%	84%	16%	100%
2013	38 918	12 198	51 116	46 077	0	46 077	1 460	86 455	12 198	98 653
%	76%	24%	100%	100%	0%	100%	100%	87%	13%	100%
2014 CARCASS MASS										
BONE IN									242kg	
DEBONED (87% of bone in)									211kg	

EXPORT OF BEEF CARCASSES CUTS TINNED MEAT BY EXPORT ABATTOIRS (Tons)

MONTHS	AFRICAN MARKETS			OVERSEAS			OTHER	GRAND TOTAL		
	CUTS	TINNED	TOTAL	CUTS	TINNED	TOTAL	CUTS	CUTS	TINNED	TOTAL
1	308	215	523	639	0	639	18	965	215	1 180
2	195	242	437	391	0	391	18	604	242	846
3	321	215	536	516	0	516	15	853	215	1 068
4	362	269	631	549	0	549	27	939	269	1 208
5	800	323	1 123	899	0	899		1 699	323	2 022
6	906	188	1 094	1 118	0	1 118	21	2 045	188	2 233
7	1003	295	1 298	1 389	0	1 389	46	2 438	295	2 733
8	1004	262	1 266	1 072	0	1 072	49	2 125	262	2 387
9	866	242	1 108	923	0	923	33	1 822	242	2 064
10	694	295	989	929	0	929		1 623	295	1 918
11	721	295	1 016	621	0	621	33	1 375	295	1 670
12	306	188	494	334	0	334	43	683	188	871
2014	7 488	3 029	10 517	9 380	0	9 380	303	17 171	3 029	20 200
%	71%	9%	100%	100%	0%	100%	100%	85%	5%	100%
2013	9 924	2 708	12 632	10 229	0	10 229	350	20 503	2 708	23 211
%	79%	9%	100%	100%	0%	100%	100%	88%	5%	100%
2014 CARCASS MASS										
BONE IN									242	
DEBONED (87% of bone in)									211	

EXPORT OF SMALL STOCK CARCASSES AND CUTS (CARCASS - UNITS)

YEAR	LIVE AFRICA MARKETS		CARCASSES AND CUTS				TOTAL	
			AFRICA MARKETS		OVERSEAS			
	TOTAL	%	TOTAL	%	TOTAL	%	TOTAL	%
2001	965 713	83.80	186 250	16.16	476	0.04	1152 439	100
2002	1149 149	79.56	274 188	18.98	21 032	1.46	1444 369	100
2003	1123 102	77.91	302 368	20.98	16 000	1.11	1441 470	100
2004	756 464	65.93	383 316	33.41	7 625	0.66	1147 405	100
2005	546 103	42.66	733 905	57.34	0	0.00	1280 008	100
2006	535 121	44.76	660 317	55.24	0	0.00	1195 438	100
2007	458 454	36.10	811 368	63.90	0	0.00	1269 822	100
2008	301 196	28.70	749 767	71.30	0	0.00	1050 963	100
2009	330 490	29.99	749 905	68.06	23 684	1.94	1104 079	100
2010	369 957	32.88	739 793	65.74	16 896	1.38	1126 646	100
2011	337 971	33.24	678 163	66.44	3 479	0.31	1019 613	100
2012	335 373	32.03	711 747	67.97	0	0.00	1047 120	100
2013	361 400	35.00	670 950	65.00	0	0.00	1032 350	100
2014	271 250	37.00	459 850	63.00	0	0.00	731 100	100
5 YEAR AVERAGE	335 190	31.37	725 875	67.90	8 812	0.73	1069 684	100

EXPORT OF SMALL STOCK CARCASSES AND CUTS (CARCASS - TONS)

YEAR	LIVE AFRICA MARKETS		CARCASSES AND CUTS				TOTAL	
			AFRICA MARKETS		OVERSEAS			
	TOTAL	%	TOTAL	%	TOTAL	%	TOTAL	%
2001	15 451	83 80	2 980	16 16	6	0 04	18 437	100
2002	18 386	77 91	4 387	20 98	265	1 11	23 038	100
2003	21 339	77 91	5 745	20 98	256	1 11	27 340	100
2004	14 373	65 93	7 283	33 41	122	0 66	21 778	100
2005	11 468	42 66	15 412	57 34	0	0 00	26 880	100
2006	11 238	44 76	13 867	55 24	0	0 00	25 105	100
2007	8 771	36 10	15 416	63 90	0	0 00	24 126	100
2008	5 722	28 70	14 523	71 30	0	0 00	20 245	100
2009	6 940	29 99	15 748	68 06	450	1 94	23 138	100
2010	7 140	32 88	14 278	65 74	300	1 38	21 718	100
2011	6 759	33 24	13 509	66 44	64	0 31	20 332	100
2012	6 681	32 03	14 178	67 97	0	0 00	20 859	100
2013	7 199	35 00	13 419	65 00	0	0 00	20 618	100
2014	5 403	37 00	9 160	63 00	0	0 00	14 564	100
AVERAGE	6 636	31 37	14 447	67 90	163	0 73	21 258	100
2014 CARCASS MASS (kg)								
BONE IN								20
DEBONED (92%)								18

SEX OF CATTLE SLAUGHTERED AT EXPORT ABATTOIRS - (%)

MONTHS	BULLS	COWS	HEIFERS	OXEN	TOTAL
1	1 90	16 25	9 04	72 80	4 048
2	2 07	15 84	7 42	74 66	4 677
3	2 59	25 24	12 10	64 46	6 455
4	2 20	26 67	15 30	89 65	6 589
5	1 67	14 12	8 46	57 52	13 770
6	1 84	19 04	14 14	67 98	13 018
7	2 90	21 46	12 42	80 13	12 499
8	2 21	17 83	8 15	52 29	12 833
9	2 20	14 75	18 55	72 83	9 543
10	1 05	10 50	11 91	68 66	10 089
11	1 68	13 34	16 16	68 82	8 031
12	2 11	18 11	14 76	92 95	2 893
AVERAGE 2014%	2 04	17 76	12 37	71 90	104 445
AVERAGE 2013%	1 94	14 79	10 69	76 65	107 428

* MeatCo (Witvlei Abattoir Excluded)

CATTLE SLAUGHTERED AT VARIOUS ABATTOIR FACTORIES (INCLUDING NCA ABATTOIRS)

MONTHS	EXPORT ABATTOIRS										TOTAL	
	WINDHOEK		WITVLEI		OKAHANDJA		OSHAKATI		KATIMA			
	2013	2014	2013	2014	2013	2014	2013	2014	2013	2014	2013	2014
1	5 333	0	433	212	3 908	4 048	0	0	0	0	9 674	4 260
2	4 776	0	737	383	0	4 677	0	0	632	0	6 145	5 060
3	8 649	0	933	907	1 239	6 455	662	247	866	0	12 349	7 609
4	6 368	5 492	1 165	1 134	3 518	1 099	1 464	723	903	750	13 418	9 198
5	8 464	9 879	915	970	6 189	3 891	2 048	159	1 108	813	18 724	15 712
6	7 296	9 559	621	1 113	5 590	3 459	2 507	926	0	881	16 014	15 938
7	4 833	8 769	937	1 074	3 666	3 730	1 214	847	0	720	10 650	15 140
8	7 507	9 158	513	580	0	3 675	721	947	0	356	8 741	14 716
9	8 634	7 840	399	184	0	1 703	297	300	0	0	9 330	10 027
10	0	10 089	613	99	7 621	0	0	350	0	0	8 234	10 538
11	9 883	8 031	688	0	0	0	622	0	0	0	11 193	8 031
12	0	2 891	437	0	3 954	0	173	0	0	0	4 564	2 891
Total	71 743	71 708	8 391	6 656	35 685	32 737	9 708	4 499	3 509	3 520	129 036	119 120

TYPE OF LIVE CATTLE TO RSA

MONTH	CALVES	%	WEANERS	%	STORES	%	OXEN	%	BREEDING	%
1	17	0.02%	6 476	6.46%	0	0%	0	0	0	0
2	68	0.07%	6 630	6.62%	7	0.01%	0	0	0	0
3	14	0.01%	9 005	8.99%	163	0.16%	0	0	0	0
4	0	0	8 554	8.54%	300	0.30%	0	0	0	0
5	0	0	0	0	0	0	0	0	0	0
6	0	0	0	0	0	0	0	0	0	0
7	0	0	231	0.23%	0	0	0	0	0	0
8	0	0	2 098	2.09%	0	0	0	0	0	0
9	0	0	12 861	12.83%	529	0.53%	64	0.06%	0	0
10	255	0.25%	17 390	17.35%	2 277	2.27%	0	0	0	0
11	616	0.61%	12 465	12.44%	1 483	1.48%	169	0.17%	32	0.03%
12	398	0.40%	10 300	10.28%	935	0.93%	26	0.03%	0	0
TOT 2014	1 368	1.37%	86 011	86%	5 696	6%	259	0.26%	32	0.03%

LIVE BOVINE	%	HEIFERS	%	COW	%	BULL	%	COW WITH CALVES	%	TOTAL
180	0.18%	158	0.16%	0	0	0	0	0	0	6 832
173	0.17%	263	0.26%	1	0%	0	0	0	0	7 143
77	0.08%	437	0.44%	44	0%	22	0.02%	4	0.004%	9 766
368	0.37%	83	0.08%	12	0.01%	7	0.01%	0	0	9 325
0	0	0	0	0	0	0	0	0	0	0
0	0	0	0	0	0	0	0	0	0	0
114	0.11%	89	0.09%	0	0	1	0.00%	0	0	435
172	0.17%	44	0.04%	68	0.07%	11	0.01%	2	0.002%	2 394
187	0.19%	846	0.84%	0	0	1	0.001%	0	0	14 488
225	0.22%	846	0.84%	28	0.03%	1	0.00%	0	0	21 023
3	0.003%	1 183	1.18%	107	0.11%	12	0.01%	45	0.05%	16 116
127	0.13%	891	0.89%	4	0.004%	7	0.01%	0	0	12 689
1 627	1.62%	4 841	4.83%	265	0.26%	63	0.06%	51	0.05%	100 211

GRADES OF BEEF CARCASSES AT EXPORT ABATTOIRS - (%)

CLASSES	1	2	3	4	5	6	7	8	9	10	11	12	AVG
A0	0 80%	0 70%	0 70%	0 50%	0 90%	0 50%	1 30%	1 70%	2 20%	2 20%	2 80%	3 60%	1 49%
A1	4 30%	3 10%	2 70%	2 10%	2 40%	2 00%	3 10%	4 90%	5 40%	7 10%	7 20%	10 20%	4 54%
A2	30 00%	22 90%	17 50%	15 10%	15 40%	22 00%	19 00%	20 10%	24 70%	30 80%	25 50%	26 30%	22 44%
A3	5 00%	3 70%	3 50%	2 10%	2 90%	4 80%	2 70%	2 30%	3 50%	3 80%	3 60%	3 80%	3 48%
A4	0 30%	0 20%	0 10%	0 20%	0 30%	0 50%	0 20%	0 20%	0 50%	0 40%	0 40%	0 50%	0 32%
A5	0 10%	-	-	-	0 10%	0 10%	-	-	-	0 10%	0 00%	-	0 08%
A6	-	-	-	-	-	-	-	-	-	0 10%	0 10%	0 10%	0 10%
AB0	1 50%	1 90%	2 10%	1 50%	1 90%	1 40%	2 10%	3 00%	2 10%	2 50%	3 40%	4 10%	2 29%
AB1	3 40%	4 70%	4 40%	4 70%	5 30%	3 20%	4 10%	5 20%	3 90%	3 00%	5 10%	4 80%	4 32%
AB2	14 80%	12 50%	12 30%	14 40%	13 20%	12 00%	9 70%	8 20%	9 40%	7 90%	7 80%	7 10%	10 78%
AB3	3 60%	4 00%	2 90%	2 60%	2 40%	2 80%	1 40%	1 20%	2 00%	1 30%	1 00%	1 90%	2 26%
AB4	0 30%	0 40%	0 30%	0 40%	0 40%	0 30%	0 20%	0 10%	0 20%	0 30%	0 20%	0 10%	0 27%
AB5	0 10%	0 10%	0 10%	0 10%	-	-	-	-	-	0 10%	0 00%	-	0 08%
AB6	-	-	-	-	-	-	-	-	-	-	0 00%	-	0 00%
B0	2 30%	2 20%	1 50%	1 40%	2 20%	1 90%	3 60%	4 20%	4 20%	5 10%	5 90%	6 20%	3 39%
B1	4 30%	6 10%	4 40%	4 90%	6 20%	4 40%	6 30%	7 70%	5 60%	6 30%	8 00%	7 00%	5 93%
B2	8 40%	14 00%	14 50%	19 40%	18 30%	14 60%	16 70%	13 00%	13 50%	11 50%	9 90%	7 10%	13 41%
B3	1 50%	3 40%	3 30%	5 00%	4 50%	4 20%	3 20%	2 00%	2 50%	1 60%	1 20%	1 70%	2 84%
B4	0 30%	0 40%	0 90%	1 00%	0 90%	1 00%	0 60%	0 40%	0 60%	0 30%	0 20%	0 30%	0 58%
B5	-	0 10%	0 20%	0 30%	0 20%	0 20%	0 10%	0 10%	0 10%	0 10%	0 10%	0 10%	0 15%
B6	-	-	0 30%	0 10%	0 10%	0 20%	-	-	0 10%	-	0 00%	0 10%	0 13%
C0	3 80%	2 50%	2 50%	1 80%	2 00%	2 80%	3 60%	5 20%	4 70%	3 40%	4 50%	4 10%	3 41%
C1	3 30%	2 90%	3 20%	1 80%	2 60%	2 80%	3 40%	4 40%	2 70%	2 30%	4 00%	2 70%	3 01%
C2	8 30%	7 80%	11 10%	10 00%	9 50%	9 50%	10 30%	9 50%	6 50%	5 60%	5 60%	5 60%	8 28%
C3	1 60%	3 20%	6 50%	5 50%	4 40%	5 10%	4 50%	3 20%	2 70%	1 80%	1 40%	1 30%	3 43%
C4	0 30%	0 80%	2 00%	2 30%	1 60%	1 60%	1 80%	1 30%	1 00%	0 60%	0 60%	0 40%	1 19%
C5	0 10%	0 30%	1 10%	1 20%	0 70%	0 60%	0 70%	0 60%	0 40%	0 20%	0 30%	0 20%	0 53%
C6	0 10%	0 30%	0 80%	0 90%	0 80%	0 70%	0 50%	0 50%	0 30%	0 30%	0 30%	0 20%	0 48%
MEASLES	0 80%	1 20%	0 70%	0 50%	0 40%	0 60%	0 40%	0 70%	0 70%	0 90%	0 60%	0 30%	0 65%
CONDEMNED	0 40%	0 40%	0 40%	0 20%	0 30%	0 40%	0 40%	0 40%	0 20%	0 40%	0 20%	0 10%	0 32%
TOTAL 2014 (n)	4 048	4 677	6 455	6 589	13 770	13 018	12 499	12 833	9 543	10 089	8 031	2 893	104 445
TOTAL 2013 (n)	9 241	4 776	9 888	9 886	14 653	12 886	8 499	7 507	8 634	7 621	9 883	3 954	107 428

*Excluding NCA Abattoirs and Witvlei Meat

AVERAGE.BEEF.CARCASS.MASS.AT.EXPORT.ABATTOIRS.-(KG).

CLASSES	1	2	3	4	5	6	7	8	9	10	11	12	AVG
A0	206.70	185.80	199.70	207.00	197.80	191.30	189.10	202.50	189.00	198.40	201.60	206.90	197.98
A1	199.50	199.80	201.90	205.30	209.30	198.10	206.70	201.30	203.40	201.30	203.50	211.10	203.43
A2	221.00	208.70	210.60	210.40	211.30	208.60	211.70	203.20	206.40	204.50	206.10	212.90	209.62
A3	238.70	223.70	220.10	214.40	215.20	214.50	215.60	208.80	207.50	212.30	212.40	212.40	216.30
A4	237.40	232.00	251.80	216.50	220.20	212.00	214.30	208.30	215.10	215.30	214.70	206.20	220.32
A5	263.30	232.00	222.00	211.00	240.90	219.90	203.70	213.80	247.70	239.90	203.30	206.00	225.29
A6	-	-	302.00	-	274.00	189.00	-	-	218.00	222.90	235.20	215.00	236.59
AB0	215.80	206.30	221.70	225.20	221.10	219.00	219.70	210.80	209.30	214.50	210.00	211.60	215.42
AB1	216.00	216.50	227.90	234.30	233.10	226.10	229.10	219.80	224.00	217.70	220.00	220.80	223.78
AB2	232.20	234.20	234.70	239.70	239.70	233.80	235.90	229.90	225.00	219.70	226.70	225.40	231.41
AB3	245.90	247.10	244.50	248.00	242.50	238.00	234.30	236.70	227.50	227.70	227.30	238.10	238.13
AB4	236.00	237.30	234.50	244.80	247.90	233.20	243.60	258.60	232.80	226.70	236.80	245.00	239.77
AB5	267.30	270.20	239.40	237.60	242.60	228.50	229.00	234.70	241.00	238.20	289.50	244.00	246.83
AB6	338.00	-	267.00	246.50	243.50	265.00	247.00	243.70	262.50	242.00	-	252.00	260.72
B0	241.80	234.30	228.00	239.70	234.80	238.30	242.40	232.80	227.00	236.90	220.70	219.90	233.05
B1	230.00	228.80	236.90	253.00	242.60	241.50	243.00	237.00	233.80	236.60	229.80	227.50	236.71
B2	249.30	243.30	249.40	263.00	262.70	257.00	256.20	251.70	245.50	243.20	238.90	241.40	250.13
B3	261.60	258.70	257.10	274.80	270.00	274.80	270.00	265.80	259.70	254.80	248.00	272.40	263.98
B4	261.40	269.50	270.00	288.10	282.40	278.20	271.00	274.40	261.70	269.60	257.60	276.50	271.70
B5	286.00	274.40	276.80	272.60	302.20	271.90	264.80	273.40	263.20	230.10	260.90	261.00	269.78
B6	371.00	315.00	266.20	289.60	294.50	285.80	275.00	242.00	285.20	285.30	273.00	321.50	292.01
C0	222.10	220.40	245.90	214.10	232.20	228.60	232.30	227.40	212.90	240.00	224.60	250.00	229.21
C1	227.10	244.20	237.90	246.00	239.00	231.10	234.90	236.20	231.70	233.90	234.70	226.60	235.28
C2	239.70	244.20	242.80	260.60	248.70	244.80	251.00	245.20	250.30	250.70	244.70	241.70	247.03
C3	268.10	252.70	252.60	270.50	264.50	264.90	265.70	260.10	261.40	270.60	263.50	250.50	262.09
C4	258.90	279.00	265.90	271.90	271.20	278.40	279.30	275.00	274.60	290.20	277.90	275.20	274.79
C5	300.80	279.00	266.50	280.80	274.50	287.90	279.50	281.50	307.10	301.90	286.70	262.60	284.07
C6	254.00	312.00	283.00	286.90	305.60	299.50	310.60	305.90	304.30	298.90	299.80	307.00	297.29
MEASLES	239.10	244.40	235.10	242.70	228.50	235.40	223.90	217.50	220.30	225.70	221.20	239.90	231.14
CONDEMNED	226.20	225.30	227.40	244.10	244.80	227.20	226.90	225.40	239.80	223.80	212.20	207.50	227.55
AVG 2014	250.17	243.53	243.98	246.18	247.91	240.74	241.59	238.74	239.59	239.11	237.29	239.62	242.38
AVG 2013	247.59	244.62	256.18	258.65	249.89	255.80	241.66	250.57	251.47	235.72	242.82	237.02	247.78

(Excluding.NCA.and.Witvlei.Abattoirs)

AVERAGE SHEEP CARCASS MASS AT EXPORT ABATTOIRS (DORPER) - (KG)

CLASSES	1	2	3	4	5	6	7	8	9	10	11	12	AVG
A0	13.12	12.96	13.77	15.00	13.64	13.36	13.49	13.05	13.15	12.90	12.8	12.51	13.31
A1	13.79	13.76	14.34	15.36	14.75	14.44	14.32	14.08	14.08	13.97	13.7	13.48	14.17
A2	15.73	16.58	16.69	16.90	16.53	16.29	16.28	15.94	15.49	15.19	15.0	14.98	15.96
A3	17.57	18.62	18.71	18.48	18.25	18.52	18.42	18.07	17.50	16.71	17.0	15.84	17.81
A4	18.07	18.87	19.66	19.32	19.56	20.23	19.21	19.04	18.50	16.72	18.1	16.12	18.62
A5	17.82	19.21	20.66	19.65	20.44	20.44	19.11	18.39	18.58	17.38	17.5	16.86	18.83
A6	17.17	19.02	20.97	19.90	20.40	20.29	19.11	19.38	17.54	17.93	18.8	16.88	18.95
AB0	13.35	15.49	14.55	15.36	14.94	13.92	14.80	14.63	14.19	14.63	14.9	14.77	14.63
AB1	15.07	16.19	14.98	15.81	14.90	15.87	16.09	15.80	15.55	15.45	16.0	15.65	15.61
AB2	17.37	17.88	17.83	17.72	16.93	17.95	18.44	18.33	17.06	17.26	17.0	17.29	17.59
AB3	20.05	20.23	20.09	20.37	20.04	19.60	20.66	22.12	20.89	19.48	19.9	19.57	20.25
AB4	21.90	21.40	22.01	21.51	21.55	21.93	21.54	22.90	23.08	20.79	22.6	19.63	21.73
AB5	21.95	22.80	21.78	22.78	21.89	23.67	22.30	22.39	23.49	19.70	21.4	24.02	22.35
AB6	27.90	22.28	23.29	24.47	21.79	25.15	24.25	21.35	19.90	19.85	23.6	18.40	22.94
B0	14.14	15.91	14.95	14.16	14.24	14.29	15.45	14.82	14.14	15.49	14.1	17.53	14.93
B1	15.79	16.63	16.37	15.53	15.57	15.54	16.32	16.33	15.86	16.48	17.8	15.81	16.17
B2	18.67	19.16	18.72	18.60	17.58	17.81	19.16	18.76	18.36	18.52	19.5	19.51	18.69
B3	23.38	23.53	21.61	21.56	20.43	20.76	22.20	22.58	22.28	22.46	22.2	23.60	22.22
B4	21.60	25.09	22.61	23.49	23.01	22.36	24.83	25.73	24.39	24.31	25.5	22.75	23.80
B5	25.50	24.76	25.31	27.29	24.19	26.14	25.04	22.09	24.28	24.17	24.0	26.47	24.93
B6	25.90	28.37	24.45	26.89	25.48	26.84	26.20	25.38	26.77	30.90	25.8	26.53	26.62
C0	15.65	17.14	16.12	15.89	15.22	16.57	17.43	17.17	16.66	16.52	16.7	16.21	16.44
C1	17.07	18.25	17.57	17.11	16.62	18.05	18.89	18.09	17.83	18.27	17.3	18.16	17.77
C2	18.95	20.41	20.28	20.23	18.40	20.22	21.02	21.05	20.41	20.39	19.6	21.03	20.17
C3	22.26	23.62	23.12	23.16	20.88	22.82	24.38	24.25	24.04	22.88	22.4	24.93	23.23
C4	24.96	25.42	24.35	25.09	22.81	25.14	25.87	26.35	25.74	25.63	25.3	25.61	25.19
C5	27.31	25.93	26.21	25.75	25.56	27.22	27.31	27.01	27.04	27.46	28.6	27.36	26.89
C6	29.60	27.91	28.93	26.46	27.90	29.07	30.09	30.28	28.50	30.60	31.8	30.14	29.28
AVG 2014	19.70	20.26	20.00	20.14	19.41	20.16	20.44	20.11	19.83	19.29	19.95	19.70	19.97
AVG 2013	19.66	19.32	19.35	19.18	19.16	19.72	19.83	19.68	20.29	19.42	19.88	19.28	19.61

AVERAGE PRODUCER PRICE OF BEEF CARCASSES AT EXPORT ABATTOIRS (N\$/KG)

CLASSES	1	2	3	4	5	6	7	8	9	10	11	12	AVG
A0	30.30	28.80	30.21	31.13	29.88	28.90	28.86	30.43	29.88	30.35	30.76	31.10	30.05
A1	31.15	30.23	31.29	31.18	31.29	30.72	30.64	31.29	32.25	32.13	32.09	32.90	31.43
A2	31.18	30.14	31.14	31.21	31.32	30.96	30.88	31.34	32.22	32.10	32.22	32.71	31.45
A3	31.36	30.78	31.13	31.04	31.09	30.74	30.93	31.19	32.28	32.17	32.60	32.65	31.50
A4	31.00	30.98	31.11	31.31	31.08	30.61	30.80	31.50	32.35	32.35	32.72	32.81	31.55
A5	31.29	30.86	32.49	30.89	31.09	30.50	31.11	30.98	33.27	32.56	32.92	33.14	31.76
A6	0.00	0.00	31.40	0.00	31.35	30.21	0.00	0.00	31.54	32.77	33.41	33.39	18.67
AB0	27.88	28.70	29.64	29.51	29.54	28.75	28.67	27.68	27.50	28.04	27.96	27.70	28.46
AB1	29.70	30.25	30.43	30.76	30.46	29.81	29.88	29.45	29.67	29.56	29.56	29.87	29.95
AB2	30.28	30.14	30.31	30.52	30.59	29.90	29.87	29.60	29.62	29.55	29.70	30.07	30.01
AB3	30.44	30.11	30.34	30.43	30.48	29.85	29.96	29.57	29.69	29.70	29.89	30.22	30.06
AB4	30.17	29.91	30.21	30.31	30.32	29.77	30.13	29.37	29.96	29.97	29.96	30.41	30.04
AB5	30.15	30.16	30.74	30.11	30.08	30.16	29.30	29.32	29.15	30.64	31.40	30.68	30.16
AB6	30.42	0.00	30.30	30.00	30.24	29.97	29.32	29.18	29.58	30.00	0.00	30.82	24.99
B0	27.57	29.35	29.29	29.31	29.14	28.46	29.00	28.11	27.81	28.21	27.47	27.54	28.44
B1	28.91	30.26	30.20	30.60	30.40	29.78	29.95	29.55	29.63	29.56	29.47	29.90	29.85
B2	29.67	30.36	30.35	30.58	30.48	29.92	30.04	29.71	29.67	29.60	29.61	29.88	29.99
B3	30.28	30.31	30.36	30.47	30.52	29.93	30.08	29.70	29.78	29.65	29.84	29.82	30.06
B4	30.28	30.17	30.34	30.44	30.46	29.93	30.06	29.61	29.69	29.65	29.73	30.01	30.03
B5	30.22	30.17	30.42	30.30	30.34	30.00	29.87	29.73	29.80	29.80	29.67	29.91	30.02
B6	31.47	30.40	30.27	30.33	30.28	29.73	30.33	29.32	30.18	29.66	29.87	29.70	30.13
C0	23.19	25.84	26.23	25.46	25.76	24.44	23.27	21.63	21.65	23.84	23.61	23.90	24.07
C1	25.48	28.57	28.47	28.54	28.36	26.94	25.90	24.70	24.86	26.50	26.43	26.48	26.77
C2	25.78	28.05	28.63	28.74	28.59	27.05	25.90	24.76	25.10	26.63	26.56	26.55	26.86
C3	26.57	28.30	28.74	28.81	28.66	27.25	25.99	24.77	25.21	26.76	26.72	26.45	27.02
C4	26.99	28.76	28.78	28.84	28.69	27.28	26.00	24.93	25.23	26.75	26.72	26.70	27.14
C5	26.83	27.03	28.74	28.84	28.80	27.18	26.46	24.99	25.28	26.87	26.85	26.48	27.03
C6	28.71	28.82	28.85	28.83	28.86	27.30	26.06	24.98	25.24	26.82	26.80	26.75	27.34
MEASLES	23.60	23.12	22.61	23.04	23.19	22.97	23.45	24.70	27.17	26.43	25.63	24.38	24.19
CONDEMNED	12.37	9.95	11.37	10.83	12.16	10.60	10.29	12.00	13.63	13.02	12.68	15.93	12.04
AVG 2014	27.96	26.68	29.15	28.08	29.12	28.32	27.10	26.80	28.30	28.72	27.76	28.96	28.04
AVG 2013	27.28	24.44	22.67	20.85	21.03	20.60	19.69	20.34	23.30	20.84	24.27	24.82	22.46

(Excluding NCA Abattoirs and Witvlei)

AVERAGE PRODUCER PRICE OF SHEEP (DORPER) CARCASSES AT NAMIBIAN EXPORT ABATTOIRS (N\$/KG)

CLASSES	1	2	3	4	5	6	7	8	9	10	11	12	AVG
A0	31.33	32.50	30.00	30.00	30.00	30.00	32.25	31.75	32.20	34.00	35.50	40.33	32.49
A1	43.67	43.50	39.20	40.00	40.00	41.10	46.75	48.75	50.20	51.00	52.50	54.33	45.92
A2	44.00	43.50	40.00	40.00	40.00	41.10	46.75	49.00	50.20	53.00	53.00	54.33	46.24
A3	44.00	43.25	40.00	40.00	40.00	41.10	46.50	49.00	50.20	53.00	53.00	54.33	46.20
A4	38.33	40.25	37.60	36.50	36.75	37.00	40.00	42.00	42.80	46.00	46.00	46.33	40.80
A5	32.67	35.25	34.60	32.75	32.75	33.00	35.25	37.00	38.20	42.50	44.00	44.33	36.86
A6	32.67	35.25	34.60	32.75	32.75	33.00	35.25	37.00	38.20	42.50	44.00	44.33	36.86
AB0	27.33	30.50	28.00	27.25	27.00	27.00	28.25	29.00	30.20	32.00	32.00	32.00	29.21
AB1	33.67	34.50	33.00	33.75	34.00	34.20	36.25	38.00	38.80	42.50	44.00	44.00	37.22
AB2	35.00	35.25	33.00	33.75	34.00	34.20	36.25	38.00	38.80	42.50	44.00	44.00	37.40
AB3	35.00	35.25	33.00	33.75	34.00	34.20	36.25	38.00	38.80	42.50	44.00	44.00	37.40
AB4	30.00	32.75	30.00	30.75	31.00	31.00	32.50	35.00	35.00	38.50	40.00	40.00	33.88
AB5	27.67	28.25	26.00	26.75	27.00	27.00	28.25	30.00	30.00	32.50	34.00	34.00	29.29
AB6	27.67	28.25	26.00	26.75	27.00	27.00	28.25	30.00	30.00	32.50	34.00	34.00	29.29
B0	24.67	25.75	25.00	23.50	23.00	23.40	26.25	27.00	27.80	29.00	29.00	29.00	26.11
B1	32.33	33.25	32.00	29.75	29.00	30.00	35.25	36.00	36.80	40.50	42.00	42.00	34.91
B2	33.67	34.00	32.00	30.50	30.00	30.80	35.25	36.00	36.80	40.50	42.00	42.00	35.29
B3	33.67	34.00	32.00	30.50	30.00	30.80	35.25	36.00	36.80	40.50	42.00	42.00	35.29
B4	29.00	31.75	29.00	27.50	27.00	27.00	28.50	30.00	30.00	31.50	33.00	33.00	29.77
B5	26.67	27.25	25.00	23.50	23.00	23.20	25.50	27.00	27.40	28.50	30.00	30.00	26.42
B6	26.67	27.25	25.00	23.50	23.00	23.20	25.50	27.00	27.40	28.50	30.00	30.00	26.42
C0	23.33	24.25	22.00	21.25	21.00	21.40	24.50	26.00	26.80	28.00	28.00	28.00	24.54
C1	31.00	31.50	31.00	28.75	28.00	28.80	33.50	35.00	35.80	39.25	40.00	40.00	33.55
C2	32.33	33.00	31.00	28.75	28.00	28.80	33.50	35.00	35.80	39.25	40.00	40.00	33.79
C3	32.33	33.00	31.00	28.75	28.00	28.80	33.50	35.00	35.80	39.25	40.00	40.00	33.79
C4	27.00	30.50	28.00	24.25	23.00	23.40	26.50	28.00	28.40	30.50	32.00	32.00	27.80
C5	24.00	26.00	24.00	21.75	21.00	21.40	24.50	26.00	26.40	27.50	29.00	29.00	25.05
C6	24.00	26.00	24.00	21.75	21.00	21.40	24.50	26.00	26.40	27.50	29.00	29.00	25.05
AVG 2014	31.56	32.71	30.57	29.60	29.33	29.76	32.88	34.38	35.07	37.69	38.79	39.15	33.46
AVG 2013	29.39	27.55	25.39	24.84	25.50	25.46	25.84	26.15	26.99	28.82	28.82	30.70	27.12

AUCTIONS: AVERAGE PRICE

TYPE	JAN 2014	FEB 2014	MAR 2014	APR 2014	MAY 2014	JUN 2014	JUL 2014	AUG 2014	SEP 2014	OCT 2014	NOV 2014	DEC 2014	AVG 2014	AVG 2013
WEANERS Price per kg	18.06	17.97	17.48	18.23	16.06	16.82	15.81	17.77	17.67	17.87	19.03	19.53	17.69	14.63
STORES Price per kg	17.81	18.11	16.60	16.83	14.80	15.34	14.36	16.07	16.20	16.85	18.13	18.32	16.62	13.94
SLAUGHTER Price per kg	19.71	19.60	16.33	14.00	14.44	14.19	14.05	14.39	17.33	16.92	19.03	19.42	16.62	13.98
LAMBS Price per kg	18.00	17.00	16.20	15.50	15.10	16.20	18.00	20.00	20.80	21.75	20.75	23.00	18.53	15.49
SLAUGHTER SHEEP Price per kg	15.00	15.00	14.40	14.00	13.67	14.00	15.90	17.50	17.90	19.00	19.50	20.00	16.32	12.86
FAT TAIL LAMB Price per kg	16.00	16.00	15.10	14.50	14.17	14.60	16.25	18.00	18.20	19.75	19.50	20.00	16.84	13.83
GOATS SMALL (<32kg) Price per head	400.00	356.25	343.00	350.00	350.00	382.00	452.50	452.50	468.00	532.50	552.50	536.67	431.33	346.10
GOATS MEDUIM (32≤45 kg) Price per head	500.00	557.50	562.00	570.00	560.00	592.00	675.00	712.50	770.00	875.00	757.50	750.00	656.79	549.61
GOATS LARGE (≥.45 kg) Price per head	600.00	900.00	940.00	975.00	900.00	950.00	987.50	1 025.00	1 140.00	1 225.00	1 200.00	1 366.67	1 017.43	918.33

TOTAL MARKETING OF CATTLE - (N)

YEAR	TOTAL LIVE EXPORTS	NAMIBIA FACTORIES	NAMIBIA FACTORIES N.C.A.	NAMIBIA BUTCHERS	NAMIBIA TOTAL PRODUCTION	SLAUGHTER MASS
1968	259 490	32 333	-	26 666	318 489	220 10
1969	240 591	46 915	-	26 156	313 662	215 30
1970	312 383	75 219	-	31 295	418 897	200 10
1971	371 502	10 186	-	30 409	412 097	192 40
1972	429 195	122 313	-	33 521	585 029	194 80
1973	324 547	149 414	-	35 039	509 000	198 20
1974	212 478	33 853	-	30 445	276 776	212 10
1975	249 565	43 823	-	34 433	327 821	216 40
1976	260 869	93 214	-	37 455	391 538	220 10
1977	199 757	115 175	-	35 348	350 280	216 10
1978	239 994	123 545	-	35 338	398 877	216 00
1979	228 857	162 762	-	31 556	423 175	203 10
1980	236 435	185 613	-	41 112	463 160	209 50
1981	330 642	108 356	-	34 377	473 375	205 50
1982	184 954	106 015	-	32 348	323 317	199 20
1983	114 258	118 486	-	35 902	268 646	214 00
1984	112 501	118 493	323	37 573	268 890	218 00
1985	137 375	120 936	3 641	39 094	301 046	212 80
1986	142 178	112 435	5 241	44 230	304 084	216 90
1987	184 153	115 889	5 587	42 571	348 200	221 30
1988	160 077	120 807	5 877	40 241	327 002	225 00
1989	163 067	138 223	5 079	40 009	346 378	225 00
1990	144 582	136 261	5 052	37 565	323 460	220 00
1991	135 367	151 828	4 837	41 813	333 845	227 80
1992	157 071	154 643	17 106	36 814	365 634	232 00
1993	179 648	166 609	16 512	37 931	400 700	234 00
1994	190 660	162 672	18 604	34 108	406 044	227 00
1995	198 773	156 381	29 690	29 645	414 489	221 34
1996	279 127	170 707	19 724	28 405	497 963	209 20
1997	92 661	88 879	13 522	31 713	226 775	222 40
1998	148 734	126 824	18 488	26 620	320 671	225 90
1999	152 416	159 522	19 410	20 021	351 369	223 20
2000	79 969	140 589	18 604	22 956	262 118	234 10
2001	110 127	142 624	15 701	41 073	309 525	239 60
2002	148 350	149 833	24 499	15 654	338 336	240 70
2003	150 601	143 885	17 776	9 950	322 212	238 50
2004	144 573	139 162	9 401	9 191	302 327	240 40
2005	210 945	141 348	16 283	8 477	377 053	245 10
2006	172 790	111 821	21 170	12 016	317 797	249 10
2007	172 587	115 460	18 881	10 893	317 821	251 80
2008	129 862	129 622	9 798	10 923	280 205	243 10
2009	133 156	130 035	7 876	9 210	280 277	246 88
2010	198 816	127 141	15 704	15 866	357 527	250 25
2011	204 858	112 602	18 757	20 344	356 561	251 27
2012	128 493	102 980	9 581	23 910	264 964	248 49
2013	262 929	115 819	13 217	33 423	425 388	236 64
2014	100 211	111 101	8 019	21 598	240 929	231 76

TOTAL MARKETING OF SMALL STOCK - (N)

YEAR	TOTAL LIVE EXPORTS	NAMIBIA FACTORIES	NAMIBIA BUTCHERS	NAMIBIA TOTAL PRODUCTION
1968	285 936	5 558	112 917	404 411
1969	283 024	6 392	127 829	417 245
1970	256 949	8 755	140 528	406 232
1971	267 023	7 837	148 779	423 639
1972	219 508	2 309	107 470	329 287
1973	167 002	911	88 655	256 568
1974	217 363	5 689	92 646	315 698
1975	314 335	-	98 231	412 566
1976	290 948	-	98 722	389 670
1977	275 951	-	101 425	377 376
1978	253 160	-	117 267	370 427
1979	248 171	-	121 450	369 621
1980	204 050	-	131 670	335 720
1981	583 182	28 220	139 333	750 735
1982	514 514	59 527	139 994	714 035
1983	259 710	65 608	142 323	467 641
1984	302 216	89 713	146 842	538 771
1985	546 513	57 581	143 372	747 466
1986	525 882	41 126	118 239	685 247
1987	604 951	44 039	137 621	786 611
1988	597 621	48 985	132 082	778 688
1989	843 112	87 196	117 011	1047 319
1990	853 553	102 070	132 676	1088 299
1991	839 537	108 777	141 557	1089 871
1992	1045 809	147 603	152 492	1345 904
1993	817 608	102 319	118 231	1038 158
1994	888 410	115 290	96 481	1100 181
1995	1008 662	52 907	121 829	1183 398
1996	928 614	2 198	128 522	1059 334
1997	865 951	0	87 714	953 665
1998	1086 320	2 552	105 213	1194 085
1999	908 153	236 919	196 670	1341 742
2000	755 363	214 754	192 795	1162 912
2001	965 713	254 966	153 706	1374 385
2002	1149 149	318 713	45 414	1513 276
2003	1123 102	366 454	23 155	1512 711
2004	756 464	435 676	38 427	1230 567
2005	546 103	772 422	23 715	1342 240
2006	535 121	725 558	74 101	1 334 780
2007	458 454	856 438	83 044	1 397 936
2008	301 196	762 647	76 818	1 140 661
2009	332 914	865 758	85 946	1 284 618
2010	369 957	842 559	77 137	1 289 653
2011	337 971	742 986	65 475	1 146 432
2012	314648	768 522	76 311	1 159 481
2013	427240	798 963	130 345	1 356 548
2014	326 221	559 160	96 854	982 235

LIVESTOCK SLAUGHTERED FOR LOCAL CONSUMPTION - (N)

DISTRICT	CATTLE		SMALL STOCK	
	2013	2014	2013	2014
LOCAL ABATTOIRS	33,423	21,598	130,345	96,854
EXPORT ABATTOIRS	18,626	23,011	128,013	99,310
2014	52,049	44,609	258,358	196,164



REPUBLIC OF NAMIBIA



Meat Board of Namibia



REPORT OF THE AUDITOR-GENERAL ON THE ACCOUNTS OF THE MEAT BOARD

FOR THE FINANCIAL YEAR ENDED 31 MARCH 2015

Published by authority

Price (Vat excluded) N\$ 39.00

Report no: 2016/63

REPUBLIC OF NAMIBIA



TO THE HONOURABLE SPEAKER OF THE NATIONAL ASSEMBLY

I have the honour to submit herewith my report on the accounts of the Meat Board of Namibia for the financial year ended 31 March 2015, in terms of Article 127(2) of the Namibian Constitution. The report is transmitted to the Honourable Minister of Finance in terms of Section 27(1) of the State Finance Act, 1991, (Act 31 of 1991) to be laid upon the Table of the National Assembly in terms of Section 27(4) of the Act.

WINDHOEK, June 2016

A handwritten signature in black ink, appearing to read 'Junias Etuna Kandjeke'.

**JUNIAS ETUNA KANDJEKE
AUDITOR-GENERAL**

**REPORT OF THE AUDITOR-GENERAL ON THE ACCOUNTS OF THE
MEAT BOARD OF NAMIBIA
FOR THE FINANCIAL YEAR ENDED 31 MARCH 2015**

1. INTRODUCTION

The accounts of the Meat Board (the Board) for the year ended 31 March 2015 are being reported on in accordance with the provisions set out in section 16 (2) of the Meat Industry Act, 1981 (Act 12 of 1981) as amended by Amendment Act 21 of 1992.

The firm Mostert Landgrebe Chartered Accountants of Windhoek has been appointed by the Auditor-General in terms of Section 26(2) of the State Finance Act, 1991, to audit the accounts of the Board on behalf of the Auditor-General and under his supervision.

Figures in the report are rounded off to the nearest Namibia Dollar and deficits are indicated in (brackets).

I certify that I have audited the accompanying financial statements of the Meat Board (the Board) for the financial year ended 31 March 2015. These financial statements comprise the following statements submitted for the year then ended:

- Balance sheet
- Income statement
- Notes to the financial statements

The financial statements were submitted by the Accounting Officer to the Auditor-General in compliance with the Meat Industry Act, 1981 (Act 12 of 1981) as amended by Amendment Act 21 of 1992, except that they were only submitted on 25 January 2015 instead of three months (3 months) after year end as required by the Act.

The financial statements, notes to the financial statements and general information provided by the Accounting Officer are attached as Annexure A – C.

2. MANAGEMENT RESPONSIBILITY FOR THE FINANCIAL STATEMENTS

Management is responsible for the preparation and fair presentation of these financial statements in accordance with the Meat Industry Act, 1981 (Act 12 of 1981) as amended by Amendment Act 21 of 1992 and relevant legislation, and for such internal control as management determines it necessary to enable the preparation of financial statements that are free from material misstatement, whether due to fraud or error.

3. AUDITOR'S RESPONSIBILITY

My responsibility is to express an opinion on these financial statements based on the audit. I conducted the audit in accordance with International Standards for Supreme Audit Institutions (ISSAIs). These standards require that I comply with ethical requirements and plan and perform the audit to obtain reasonable assurance about whether the financial statements are free from material misstatement

Powers and duties

Section 25 (1) (c) of the State Finance Act, 1991, provides that the Auditor-General should satisfy himself that:

- (a) All reasonable precautions have been taken to ensure that all monies due to the State are collected, and that the laws relating to the collection of such monies have been complied with;
- (b) All reasonable precautions have been taken to safeguard the receipt, custody and issue of and accounting for, the State's assets, such as stores, equipment, securities and movable goods; and
- (c) The expenditure has taken place under proper authority and is supported by adequate vouchers or other proof.

In addition, Section 26(1) (b) (iv) of the State Finance Act, 1991, empowers the Auditor-General to investigate and report on the economy, efficiency and effectiveness of the use of the State's resources.

An audit involves performing procedures to obtain audit evidence about the amounts and disclosures in the financial statements. The procedures selected depend on the auditor's judgment, including the assessment of the risks of material misstatement of the financial statements, whether due to fraud or error. In making those risk assessments, the auditor considers internal control relevant to the entity's preparation and fair presentation of the financial statements in order to design audit procedures that are appropriate in the circumstances, but not for the purpose of expressing an opinion on the effectiveness of the entity's internal control.

An audit also includes evaluating the appropriateness of accounting policies used and the reasonableness of accounting estimates made by management, as well as evaluating the overall presentation of the financial statements.

I believe that the audit evidence I have obtained is sufficient and appropriate to provide a basis for the audit opinion.

4. ACKNOWLEDGEMENT

The assistance and co-operation by the staff of the Board during the audit is appreciated.

5. KEY AUDIT FINDINGS

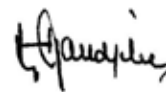
No key audit findings were observed during the audit.

6. UNQUALIFIED AUDIT OPINION

The accounts of the Meat Board for the financial year ended 31 March 2015 were audited by me in terms of the provisions of Section 16(2) of the Act, read with Section 25(1)(b) of the State Finance Act, 1991.

In my opinion, the financial statements present fairly, in all material respects, the financial position of the Meat Board of Namibia as at 31 March 2015, and their financial performance and cash flows for the year then ended in accordance with Generally Accepted Accounting Practice (GAAP).

WINDHOEK, June 2016



JUNIAS ETUNA KANDJEKE
AUDITOR-GENERAL

MEAT BOARD OF NAMIBIA
BALANCE SHEET AS AT 31 MARCH

	Note	2015 N\$	2014 N\$
ASSETS			
NON CURRENT ASSETS		82 012 887	67 237 068
Property and equipment	1	35 507 959	18 412 601
Investments	2	46 504 928	55 726 994
CURRENT ASSETS		21 266 070	18 074 911
Project bank	3	4 257 700	6 888 229
Cash resources	4	1 535 392	354 827
Ear Tag accounts	15	4 625 962	4 610 012
Accounts receivable	5	10 847 016	6 559 531
TOTAL ASSETS		103 278 957	85 649 670
FUNDS AND LIABILITIES			
FUNDS AND RESERVES		98 812 809	81 659 696
Reserve Fund	6	11 145 013	12 007 550
Cattle Stabilisation Fund	7	2 109 371	1 858 867
Small Stock Stabilisation Fund	8	-	-
Animal Health Fund	9	14 131 338	13 229 410
Fan Meat Fund	10	7 427 228	6 206 645
Drought Admin Fund	11	652 500	634 668
Stock Brands Registration Fund	12	370 295	656 230
Feasibility Study of meat export to Angola & DRC	13	4 686 008	4 398 694
NCA Levy Fund	14	17 231 229	23 305 252
Ear Tag Fund	15	4 625 962	4 610 012
MA WF Projects Fund	16	1 728 760	3 366 093
Finland Embassy	17	1 448	30 249
MCA Caprivi	18	1 417 357	1 749 532
MCA 2	19	697	372 480
Shares in AgriBoard Buildings	1	33 285 603	9 155 310
CURRENT LIABILITIES			
Trade and other payables	20	4 466 148	3 989 700
TOTAL FUNDS AND LIABILITIES		103 278 957	85 649 669

MEAT BOARD OF NAMIBIA

INCOME STATEMENT FOR THE YEAR ENDED 31 MARCH

	Note	2015 N\$	2014 N\$
INCOME		23 293 334	23 228 365
General levies on livestock exported or slaughtered		20 325 150	22 395 489
In transit levy		297 806	-
Meat products levy (Imports)		2 670 378	832 876
OTHER INCOME		4 814 343	4 796 393
Interest received		3 065 160	2 766 292
Operational profit of Agricultural Board's building		-	396 786
Inspection fees		-	72 662
Administration fees		835 133	899 965
House rent received		30 695	24 580
Poultry scheme administration fee		883 355	636 108
GROSS INCOME		28 107 677	28 024 758
EXPENSES			
CONTRIBUTIONS AND LEVIES		8 494 353	8 667 451
Budgeted contributions to agricultural unions	21	7 887 198	7 995 586
Agents' commission on levies	22	607 155	671 865
ADMINISTRATION EXPENSES		19 093 882	17 136 286
Board administration expenses	23	1 689 669	1 797 703
Personnel expenses	24	8 896 681	10 138 297
Travelling and subsistence	25	101 777	204 817
Office expenses	26	4 355 644	4 688 753
Market research	27	930 799	-
Depreciation	28	459 855	306 716
Net border control costs	29	2 659 457	-
TOTAL EXPENSES		27 588 235	25 803 737
SURPLUS FOR THE YEAR		519 442	2 221 021
Net classification costs	30	1 381 707	(3 448 194)
		(862 265)	(1 227 170)
Bad debts		-	(112 720)
TRANSFERRED TO THE RESERVE FUND		862 265	1 339 890
NET SURPLUS FOR THE YEAR		-	-

**MEAT BOARD OF NAMIBIA
NOTES TO THE ANNUAL FINANCIAL STATEMENTS
FOR THE YEAR ENDED 31 MARCH**

FUND ACCOUNTS

The moneys of the Board are accounted for in fourteen Fund accounts mentioned below:

- (a) General account as stipulated in Section 13(1) (a) of the Act,
- (b) Reserve account as stipulated in Section 13(1) (c) of the Act, and
- (c) Special accounts in terms of Section 13(1) (b) of the Act for each of the three special levies introduced in terms of Section 17(1) (a) of the Act, namely:
 - Cattle Stabilisation Levy account,
 - Small Stock Stabilisation Levy account and Goat Fund, and animal Health account.

The following funds are specifically dedicated to the respective aims reflected in the names of the Funds.

- (d) Northern Communal Areas Abattoir Fund,
- (e) Drought Relief Administration Fund,
- (f) Quarantine Camp Fund,
- (g) Stock Brands Registration Fund,
- (h) Feasibility study of meat export to Angola & DRC,
- (i) VCF Task Force Project Fund,
- (j) NCA Marketing Incentive Fund,
- (k) DVS Contingency Fund,
- (l) National Traceability Scheme (Fan Meat Fund).

For practical and economical reasons, the Board operates one current account at the bank.

The balances at 31 March of the fourteen Funds are reflected in the Balance Sheet and the transactions in the Income and Expenditure statements.

MEAT BOARD OF NAMIBIA
NOTES TO THE ANNUAL FINANCIAL STATEMENTS (Continued)
FOR THE YEAR ENDED 31 MARCH

1. PROPERTY, PLANT AND EQUIPMENT

	Cost	Accumulated depreciation	Carrying value
	N\$	N\$	N\$
2015 YEAR			
Land and buildings - Agricultural Board	33 285 603	-	33 285 603
Land and buildings - Meat Board	248 757	-	248 757
Furniture and fittings - Meat Board	899 523	(254 618)	644 905
Computer equipment - Meat Board	1 323 996	(831 264)	492 732
Show equipment - Meat Board	47 268	(30 634)	16 634
Motor vehicles - Meat Board	2 025 359	(1 206 031)	819 328
	37 830 506	(2 322 547)	35 507 959

THE CARRYING VALUE OF PLANT AND EQUIPMENT CAN BE RECONCILED AS FOLLOWS:

	Carrying value beginning of year	Revaluation/ additions	Disposals	Depreciation	Carrying Value end of year
	N\$	N\$	N\$	N\$	N\$
2014 YEAR					
Land and buildings - Agricultural Board	9 155 310	24 130 293	-	-	33 285 603
Land and buildings - Meat Board	248 757	-	-	-	248 757
Furniture and fittings - Meat Board	575 724	132 949	-	(63 768)	644 905
Computer equipment - Meat Board	368 936	223 333	(268)	(116 707)	492 732
Show equipment - Meat Board	18 482	65 760	-	(1 848)	16 634
Motor vehicles - Meat Board	1 142 754	203 490	-	38 9 185	819 328
	11 509 961	24 552 335	(268)	554 338	35 507 959

MEAT BOARD OF NAMIBIA

NOTES TO THE ANNUAL FINANCIAL STATEMENTS FOR THE YEAR ENDED 31 MARCH
(Continued)

1. PROPERTY, PLANT AND EQUIPMENT (continued)

	Cost	Accumulated depreciation	Carrying value
	N\$	N\$	N\$
2014 YEAR			
Land and buildings - Agricultural Board	9 155 310	-	9 155 310
Land and buildings - Meat Board	248 757	-	248 757
Furniture and fittings - Meat Board	766 575	(190 851)	575 724
Computer equipment - Meat Board	1 100 663	(731 616)	369 047
Show equipment - Meat Board	47 268	(28 786)	18 482
Motor vehicles - Meat Board	1 959 600	(816 846)	1 142 754
	13 278 173	(1 768 099)	11 510 074

MEAT BOARD OF NAMIBIA
NOTES TO THE ANNUAL FINANCIAL STATEMENTS FOR THE YEAR ENDED 31 MARCH
(Continued)

2. INVESTMENTS

	2015	2014
	N\$	N\$
Agricultural Bank - Call deposit	-	5 593 232
Simonis Storm Securities	8 183 056	7 672 465
First National Bank	18 403	14 210
PSG Konsult	12 416 683	12 564 969
Call deposits	-	51 052
Treasury Bills	12 416 683	12 513 917
Sanlam Namibia	12 330 500	17 120 562
Bank Windhoek	10 868 999	17 120 562
Capricorn	1 461 501	-
Namibia Equity Brokers	13 556 286	12 761 556
Total	46 504 928	55 726 994

3. PROJECT BANK ACCOUNT

Stock brands registration account	456 938	735 207
MAWF Project account	1 728 760	3 366 093
Drought Administration account	652 500	634 668
Finland Embassy account	1 448	30 249
MCA Caprivi account	1 417 357	1 749 532
MCA 2 account	697	372 480
	4 257 700	6 888 229

MEAT BOARD OF NAMIBIA
NOTES TO THE ANNUAL FINANCIAL STATEMENTS FOR THE YEAR ENDED 31 MARCH
(Continued)

4. CASH RESOURCES

	2015	2014
	N\$	N\$
Favourable balance at the bank	2 052 459	386 978
Less: Cheques uncashed at 31 March	(518 717)	(33 801)
	1 533 742	353 177
Petty cash	1 650	1 650
	1 535 392	354 827

MEAT BOARD OF NAMIBIA

NOTES TO THE ANNUAL FINANCIAL STATEMENTS FOR THE YEAR ENDED 31 MARCH

(Continued)

5. TRADE AND OTHER RECEIVABLES

	2015	2014
	N\$	N\$
Import VAT	2 941 896	1 871 978
Trade Debtors (Levies)	7 128 352	4 351 671
Accrued interest	399 040	333 372
Scanning	29 561	-
Stock Brands expenses	32 922	-
VAT	778	-
Ear Tag Expenses	38 561	-
Ear Tag VAT	273 396	-
Nampower (Electricity deposit)	2 510	2 510
Cash-book balance	10 847 016	6 559 531

6. RESERVE FUND

DEFICIT FOR THE YEAR	(862 265)	(1 339 890)
Asset written off	(212)	-
ACCUMULATED FUNDS AT THE BEGINNING OF THE YEAR	12 007 550	13 347 440
ACCUMULATED FUNDS AT THE END OF THE YEAR	11 145 013	12 007 550

MEAT BOARD OF NAMIBIA

NOTES TO THE ANNUAL FINANCIAL STATEMENTS FOR THE YEAR ENDED 31 MARCH

(Continued)

7. CATTLE STABILISATION FUND

	2015	2014
	N\$	N\$
INCOME	3 671 620	3 359 703
Bush Eradication Project Income	3 584 881	3 316 442
Seal of Quality income	86 739	43 261
EXPENSES	3 421 116	3 462 830
Agricultural Show	50 000	21 600
Bush Eradication Project Expenses	3 273 683	2 139 876
Data base upgrade	-	252 174
International Markets & Trade Relations	-	304 518
Market developemnt communal areas	-	251 377
Promotions and advertising	-	356 817
Seal of Quality	97 433	136 468
SURPLUS/(DEFICIT) FOR THE YEAR	250 504	(103 127)
ACCUMULATED FUNDS AT THE BEGINNING OF THE YEAR	1 858 867	1 961 994
ACCUMULATED FUNDS AT THE END OF THE YEAR	2 109 371	1 858 867

MEAT BOARD OF NAMIBIA

NOTES TO THE ANNUAL FINANCIAL STATEMENTS FOR THE YEAR ENDED 31 MARCH

(Continued)

8. SMALL STOCK STABILISATION FUND

	2015	2014
	N\$	N\$
EXPENSES	-	33 596
Advertising and promotions	-	15 196
Agricultural show	-	18 400
DEFICIT FOR THE YEAR	-	(33 596)
ACCUMULATED FUNDS AT THE BEGINNING OF THE YEAR	-	33 596
ACCUMULATED FUNDS AT THE END OF THE YEAR	-	-

MEAT BOARD OF NAMIBIA
NOTES TO THE ANNUAL FINANCIAL STATEMENTS (Continued)
FOR THE YEAR ENDED 31 MARCH

9. ANIMAL HEALTH FUND

	2015	2014
	N\$	N\$
INCOME	1 235 955	1 252 042
Special levies	1 235 955	1 252 042
EXPENSES	334 027	735 589
Agent commission levy	37 947	37 561
Animal welfare	135 560	381 332
Animal Health Consultative Forum	28 862	44 320
Study bursaries	131 658	272 376
SURPLUS/(DEFICIT) FOR THE YEAR	901 928	516 453
ACCUMULATED FUNDS AT THE BEGINNING OF THE YEAR	13 229 410	12 712 957
ACCUMULATED FUNDS AT THE END OF THE YEAR	14 131 338	13 229 410

MEAT BOARD OF NAMIBIA

NOTES TO THE ANNUAL FINANCIAL STATEMENTS FOR THE YEAR ENDED 31 MARCH

(Continued)

10. FAN MEAT FUND

	2015	2014
	N\$	N\$
INCOME	3 835 440	3 760 763
Special levies	3 835 440	3 760 763
EXPENSES	2 614 857	3 049 429
Admin and stationery	75 867	75 353
Agents commission levy	113 842	112 823
Database	27 801	74 758
Extension and training	42 644	112 944
Fan Meat Industry Studies	146 809	197 180
Industry studies	411 265	340 217
Media	-	10 800
Namlist expenses	231 398	696 806
Office rent	104 882	128 294
Printing and publications	83 421	9 960
Staff salaries	1 221 104	1 137 026
Subscriptions	-	73 578
Subsistence and travelling	121 129	79 690
Vehicle maintenance	34 695	-
SURPLUS FOR THE YEAR	1 220 583	711 334
ACCUMULATED FUNDS AT THE BEGINNING OF THE YEAR	6 206 645	5 495 311
ACCUMULATED FUNDS AT THE END OF THE YEAR	7 427 228	6 206 645

MEAT BOARD OF NAMIBIA

NOTES TO THE ANNUAL FINANCIAL STATEMENTS FOR THE YEAR ENDED 31 MARCH
(Continued)**11. DROUGHT RELIEF ADMINISTRATION FUND**

	2015	2014
	N\$	N\$
INCOME	17 832	17 196
Interest received	17 832	17 196
EXPENSES	-	-
SURPLUS FOR THE YEAR	17 832	17 196
ACCUMULATED FUNDS AT THE BEGINNING OF THE YEAR	634 668	617 472
ACCUMULATED FUNDS AT THE END OF THE YEAR	652 500	634 668

MEAT BOARD OF NAMIBIA
NOTES TO THE ANNUAL FINANCIAL STATEMENTS (Continued)
FOR THE YEAR ENDED 31 MARCH

12. STOCK BRANDS REGISTRATION FUND

	2015	2014
	N\$	N\$
INCOME	449 863	494 504
Brand registration fee	439 617	480 581
Interest received	10 247	13 923
EXPENSES	735 799	660 393
Admin fees - 5%	21 981	24 030
Bank charges	45 372	44 216
Database	197 681	149 637
Leave accrued	17 562	-
Office expenses	-	4 795
Office rent	56 114	65 012
Printing, publication and information materials	31 971	24 105
Staff salaries	291 346	272 597
Stationaries and communication	73 772	76 001
SURPLUS FOR THE YEAR	(285 935)	(165 889)
ACCUMULATED FUNDS AT THE BEGINNING OF THE YEAR	656 230	822 199
ACCUMULATED FUNDS AT THE END OF THE YEAR	370 295	656 230

MEAT BOARD OF NAMIBIA

NOTES TO THE ANNUAL FINANCIAL STATEMENTS FOR THE YEAR ENDED 31 MARCH
(Continued)

13. FEASIBILITY STUDY OF MEAT EXPORT ANGOLA AND DRC

	2015	2014
	N\$	N\$
INCOME	287 314	236 591
Interest received	287 314	236 591
EXPENSES	-	-
SURPLUS FOR THE YEAR	287 314	236 591
ACCUMULATED FUNDS AT THE BEGINNING OF THE YEAR	4 398 694	4 162 103
ACCUMULATED FUNDS AT THE END OF THE YEAR	4 686 008	4 398 694

MEAT BOARD OF NAMIBIA

NOTES TO THE ANNUAL FINANCIAL STATEMENTS FOR THE YEAR ENDED 31 MARCH
(Continued)

14. NCA LEVY FUND

	2015	2014
	N\$	N\$
EXPENSES	6 074 023	5 610 930
NCA Farmers Mentorship Program	3 587 808	4 416 600
NCA Master Plan	637 115	1 800
MCA Caprivi Project	-	118 726
Depreciation of motor vehicles	141 544	121 398
Improvements of cattle value NCA	1 707 556	952 406
DEFICIT FOR THE YEAR	(6 074 023)	(5 610 930)
ACCUMULATED FUNDS AT THE BEGINNING OF THE YEAR	23 305 252	28 916 182
ACCUMULATED FUNDS AT THE END OF THE YEAR	17 231 229	23 305 252

MEAT BOARD OF NAMIBIA
NOTES TO THE ANNUAL FINANCIAL STATEMENTS FOR THE YEAR ENDED
31 MARCH (Continued)

15. EAR TAG FUND - BALANCE SHEET

	2015	2014
	N\$	N\$
CURRENT ASSETS	4 625 962	4 610 012
Cash resources	2 787 559	1 263 677
Import VAT	448 121	-
VAT	500	-
Inventory	1 389 782	337 688
	4 625	
	962	4 610 012
TOTAL ASSETS		
EQUITY AND LIABILITIES		
CAPITAL AND RESERVES	3 681 350	4 319 390
Capital reserves	3 393 456	4 031 496
Ear Tag subsidies	287 894	287 894
CURRENT LIABILITIES	944 612	290 622
Accrued expenses	872 476	79 806
Customer control	-	6 420
Provision for leave	72 136	-
VAT	-	204 396
	4 625 962	4 610 012

MEAT BOARD OF NAMIBIA

NOTES TO THE ANNUAL FINANCIAL STATEMENTS FOR THE YEAR ENDED 31 MARCH

(Continued)

16. EAR TAG FUND - INCOME STATEMENT

	2015	2014
	N\$	N\$
Sales	10 889 634	9 109 881
Cost of sales	8 496 876	6 945 595
Opening inventory	3 008 647	6 009 911
Purchases	6 878 011	3 944 331
Closing inventory	(1 389 782)	(3 008 647)
Gross profit	2 392 758	2 164 286
OTHER INCOME	3 729	194 024
Interest received	3 729	3 557
Money recovered from misappropriation of funds	-	52 826
Re-imbursement from MA WF	-	137 641
Gross income	2 396 487	2 358 310

MEAT BOARD OF NAMIBIA

NOTES TO THE ANNUAL FINANCIAL STATEMENTS FOR THE YEAR ENDED 31 MARCH

(Continued)

	2015	2014
	N\$	N\$
EXPENSES	2 696 839	2 695 999
Admin fees	544 482	455 438
Audit fees	-	2 100
Bank charges	124 651	115 654
Commission	449 052	447 478
Database	174 096	263 281
Leave accrued	72 136	-
Misappropriation of funds	-	69 804
Office equipment	3 680	4 889
Office rent	98 475	89 790
Printer lease	86 270	111 681
Printing and publications	11 950	5 028
Staff salaries	996 902	970 844
Stationaries and communication	81 458	150 817
Training and meetings	53 687	9 195
DEFICIT FOR THE YEAR	(300 352)	(337 689)
ACCUMULATED FUNDS AT THE BEGINNING OF THE YEAR	3 693 808	4 031 497
ACCUMULATED FUNDS AT THE END OF THE YEAR	3 393 456	3 693 808

MEAT BOARD OF NAMIBIA

NOTES TO THE ANNUAL FINANCIAL STATEMENTS FOR THE YEAR ENDED 31 MARCH

(Continued)

17. MAWF PROJECTS FUND - DVS PROJECTS

	2015	2014
	N\$	N\$
INCOME	86 275	295 349
Interest received	86 275	295 349
EXPENSES	548 666	16 990 699
Veterinary clinics	-	6 887 609
Expansion of CVL	-	8 506 568
NCA marketing	548 666	1 596 522
DEFICIT FOR THE YEAR	(462 391)	(16 695 350)
ACCUMULATED FUNDS AT THE BEGINNING OF THE YEAR	2 191 151	18 886 501
ACCUMULATED FUNDS AT THE END OF THE YEAR	1 728 760	2 191 151

MEAT BOARD OF NAMIBIA

NOTES TO THE ANNUAL FINANCIAL STATEMENTS FOR THE YEAR ENDED 31 MARCH
(Continued)**18. EMBASSY OF FINLAND FUND**

	2015	2014
	N\$	N\$
INCOME	468 670	697
Grant from Embassy	468 650	-
Interest received	20	697
EXPENSES	497 471	340 519
Audit fees	40 756	-
Bank charges	2 378	1 007
Development master plan	84 444	4 826
Mentorship	332 548	-
Market diversification study	-	108 929
Printing and publications	-	72 420
Travelling	37 345	153 337
DEFICIT FOR THE YEAR	(28 801)	(339 822)
ACCUMULATED FUNDS AT THE BEGINNING OF THE YEAR	30 249	370 071
ACCUMULATED FUNDS AT THE END OF THE YEAR	1 448	30 249

MEAT BOARD OF NAMIBIA
NOTES TO THE ANNUAL FINANCIAL STATEMENTS FOR THE YEAR ENDED 31 MARCH
(Continued)

19. MCA CAPRIVI PROJECT

	2015	2014
	N\$	N\$
INCOME	2 850 831	4 272 841
Grant from Millennium Challenge Account	2 846 918	4 270 377
Interest received	3 913	2 464
EXPENSES	3 084 688	2 780 089
Bank charges	1 821	1 238
Istituto Caporale	234 097	191 148
Meat Board consultation expenses	1 722 258	1 248 159
Project management fee	136 506	127 703
Tad scientific	227 661	627 303
University of Pretoria	762 345	584 538
DEFICIT FOR THE YEAR	(233 857)	1 492 752
ACCUMULATED FUNDS AT THE BEGINNING OF THE YEAR	1 651 214	158 462
ACCUMULATED FUNDS AT THE END OF THE YEAR	1 417 357	1 651 214

MEAT BOARD OF NAMIBIA

NOTES TO THE ANNUAL FINANCIAL STATEMENTS FOR THE YEAR ENDED 31 MARCH
(Continued)

20. MCA 2 PROJECT

	2015	2014
	N\$	N\$
INCOME	267 201	1 761 402
Grant from Millennium Challenge Account	266 983	1 760 837
Interest received	218	565
EXPENSES	574 272	2 006 952
Admin fees	66 426	199 278
Bank charges	1 400	3 328
Meat Board consultation expenses	176 650	1 003 761
Office expenses	16 773	27 838
Office equipment	96 630	-
Staff salaries	179 378	504 918
Stationeries and communication	27 179	55 231
S&T and accommodation	-	54 650
Training and meetings	10 292	157 948
Unknown item	64 256	(64 256)
DEFICIT FOR THE YEAR	(307 526)	(245 551)
ACCUMULATED FUNDS AT THE BEGINNING OF THE YEAR	308 227	553 774
ACCUMULATED FUNDS AT THE END OF THE YEAR	697	308 223

MEAT BOARD OF NAMIBIA
NOTES TO THE ANNUAL FINANCIAL STATEMENTS FOR THE YEAR ENDED 31 MARCH
(Continued)

21. TRADE AND OTHER PAYABLES

	2015	2014
	N\$	N\$
Outstanding Value Added Tax Payable	-	68 208
Provision for leave accrued	1 463 855	696 367
Provision for printing of annual report	60 910	29 425
Farm audit	42 520	29 708
Scanning	-	22 785
Audit fee - Finland Embassy Project	6 029	-
Actual Union Contribution	525 227	-
Stock brands	86 644	78 997
Sundry accruals	2 280 963	3 143 207
MA WF DVS	-	1 174 974
MCA Caprivi	-	98 319
	4 466 148	5 341 990

22. CONTRIBUTIONS TO AGRICULTURAL UNIONS

Budgeted funding from the General Fund:

Namibian Agricultural Union	3 943 597	3 997 793
Namibian National Farmers' union	3 943 601	3 997 742
	7 887 198	7 995 586

23. AGENTS COMMISSION ON LEVIES

Agents commission excluding 15% Value Added Tax	607 155	671 865
---	----------------	----------------

MEAT BOARD OF NAMIBIA

NOTES TO THE ANNUAL FINANCIAL STATEMENTS FOR THE YEAR ENDED 31 MARCH
(Continued)**24. BOARD MEMBERS' ADMINISTRATIVE EXPENSES**

	2015	2014
	N\$	N\$
Allowance	591 648	875 385
Insurance	3 390	3 018
Secretariat and administration	126 011	153 730
Travelling and subsistence expenses	918 416	749 866
Workshops	50 204	15 704
	1 689 669	1 797 703

25. PERSONNEL EXPENSES

Training	141 210	504 209
Staff remuneration (TCC)	7 688 724	9 145 487
Overtime	-	488 601
Leave accrued	1 066 747	-
	8 896 681	10 138 297

26. TRAVELLING AND SUBSISTENCE

Head office	101 777	59 851
Inspectors	-	144 966
	101 777	204 817

27. OFFICE EXPENSES

Annual report	72 136	34 754
Audit fees	31 485	29 425
Bank charges	73 361	67 817
Database upgrade	251 272	-
General office administration expenses	235 121	266 990
Human resources services expenses	165 064	408 573
Information systems services expenses	513 070	563 475
Inspection services expenses	-	385 827
Insurance	106 228	102 283
Legal costs	708 844	1 200 867
Market share promotion scheme	169 420	79 875
Maintenance - vehicles	97 691	105 255
Office rent	976 361	767 926
Postage and stamps	45 171	34 541
PRO	524 818	276 179
Printing	51 897	47 969
Rent of office equipment	43 862	32 634
Telecommunications	289 843	284 363
	4 355 644	4 688 753

MEAT BOARD OF NAMIBIA

NOTES TO THE ANNUAL FINANCIAL STATEMENTS FOR THE YEAR ENDED
31 MARCH (Continued)**28. MARKET RESEARCH**

	2015	2014
	N\$	N\$
Marketing development	608 011	-
International market	322 788	-
	930 799	-

29. DEPRECIATION

Motor vehicles	285 860	160 475
Furniture and fittings	59 141	60 426
Computer equipment	113 006	83 761
Show equipment	1 848	2 054
	459 855	306 716

30. NET BORDER CONTROL COSTS

Inspection fee received	(3 244 470)	-
Inspection expenses	5 903 927	-
Staff remuneration	4 669 133	-
S&T allowances	344 364	-
Office rent	166 679	-
Clothing	27 951	-
Accommodation	129 626	-
Vehicle maintenance and depreciation	127 070	-
Depreciation of assets	8 328	-
Stationary and other consumables	430 776	-
	2 659 457	-

31. NET CLASSIFICATION COSTS

Classification levy	(5 617 018)	(5 899 937)
Classification salaries	6 227 477	8 231 632
Classification S&T	355 602	421 271
Registration of local abattoir	11 790	-
Marking ink	228 259	191 988
Classification expenses	175 597	503 240
	1 381 707	3 448 194

