



# Livestock and Livestock Products Board of Namibia

## MARKET WATCH

### Beef & Pork December 2024

T: +264 61 275 846 • F: +264 61 228 310 • E: [Statistician@nammic.com.na](mailto:Statistician@nammic.com.na)

• [www.nammic.com.na](http://www.nammic.com.na)

Agricultural Boards Building • 30 David Hosea Meroro Rd • PO Box 38

Windhoek, Namibia



# Beef Monthly Market Watch



## November 2024 review

Total marketing of cattle decreased by 34.76% on a year-on-year basis, from the 27 199 cattle marketed in November 2023 to 17 744 in November 2024. On a year-on-year basis, live exports are 48.74% lower than observed in November 2023. Exports increased by 4.43% from the 7 806 cattle heads exported in October to 8 152 cattle heads exported during November 2024. South Africa absorbed majority of cattle (weaner) exports from Namibia, while reduced quantities were exported to Botswana. Weaner sVCF auction prices reduced by N\$0.26/kg from price of N\$28.67/kg observed in October to N\$28.41/kg in November 2024.

### WEANER AUCTION PRICE

#### sVCF

N\$ 28.41/kg

### nVCF AUCTION PRICES

Heifers - N\$33.13/kg

### B2

#### CARCASS PRICE

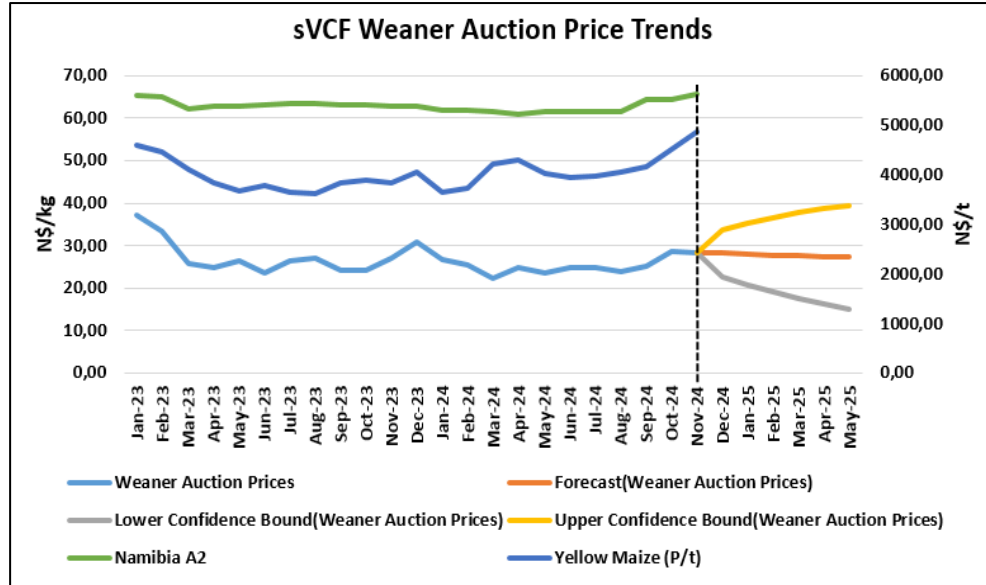
N\$ 63.01/kg

### WEANER/B2 PRICE RATIO

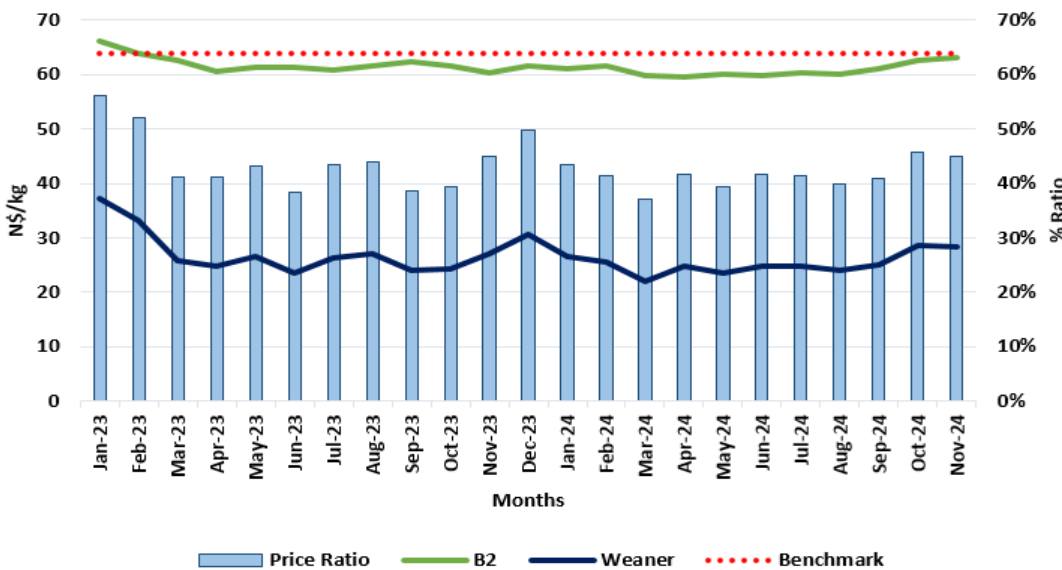
45%

Weaner auction prices increased by 4.80% from N\$27.11/kg in November 2023 to N\$28.41/kg in November 2024. On a month-on-month basis, the sVCF weaner auction prices decreased by 0.91% during the period under review.

Yellow maize prices in South Africa increased by 7.81% during November 2024. The weaner prices are forecasted to decrease by 0.78% (N\$28.19/kg in December 2024), due to a slight ease in feed costs and seasonal trends.



## Weaner/B2 Price Ratio



The weaner/B2 price ratio during November 2024 stood at 45%, compared to the 46% recorded in October 2024.

Due to a general decline in weaner prices, the weaner/B2 price ratio has been below the benchmark 64%.

Disclaimer: All statements regarding future events reflect the Livestock and Livestock Products Board's views, and are not a guarantee of future performance or developments.

# Beef Monthly Market Watch



Producer Prices (Excl. Vat) - N\$/kg

Forecast

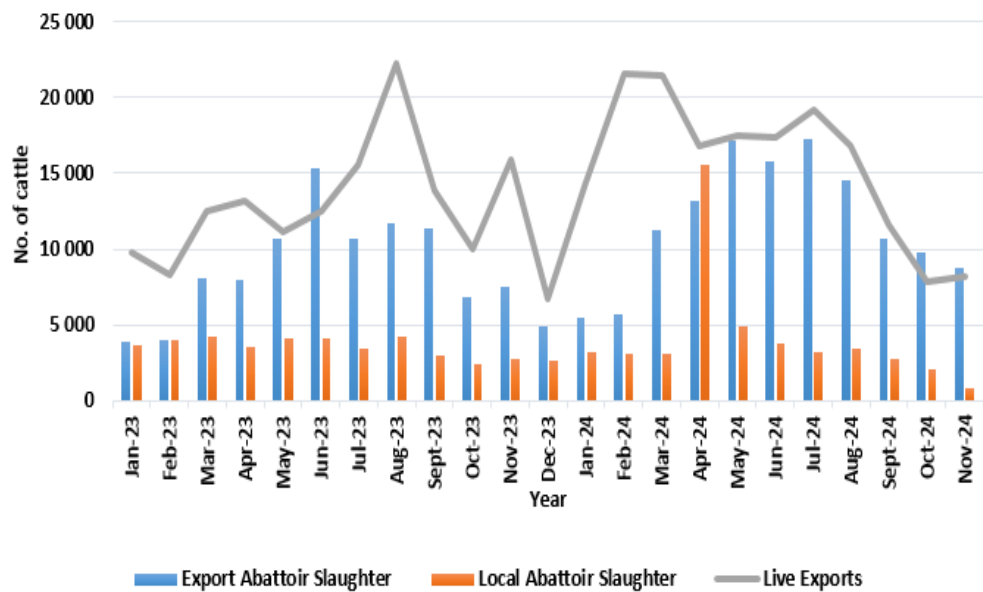
Month	Nov-23	Aug-24	Sep-24	Oct-24	Nov-24	Δ y/y %	Dec-24
Weaner Auction Price	27.11	24.01	25.02	28.67	28.41	4.80	28.19
Slaughter Oxen Auction Price	29.54	28.92	30.07	32.23	34.36	16.32	34.11
Class B2 (NAM)	60.40	60.19	61.19	62.63	63.01	4.32	63.31
Class B2 (RMAA)	48.19	46.46	44.24	45.55	47.92	-0.56	46.14
All-Grade Carcass Price	59.99	56.44	58.56	59.10	59.40	-0.98	57.72

Beef all-grade and B2 carcass producer prices are forecasted to N\$57.72/kg and N\$63.31/kg in December, respectively.

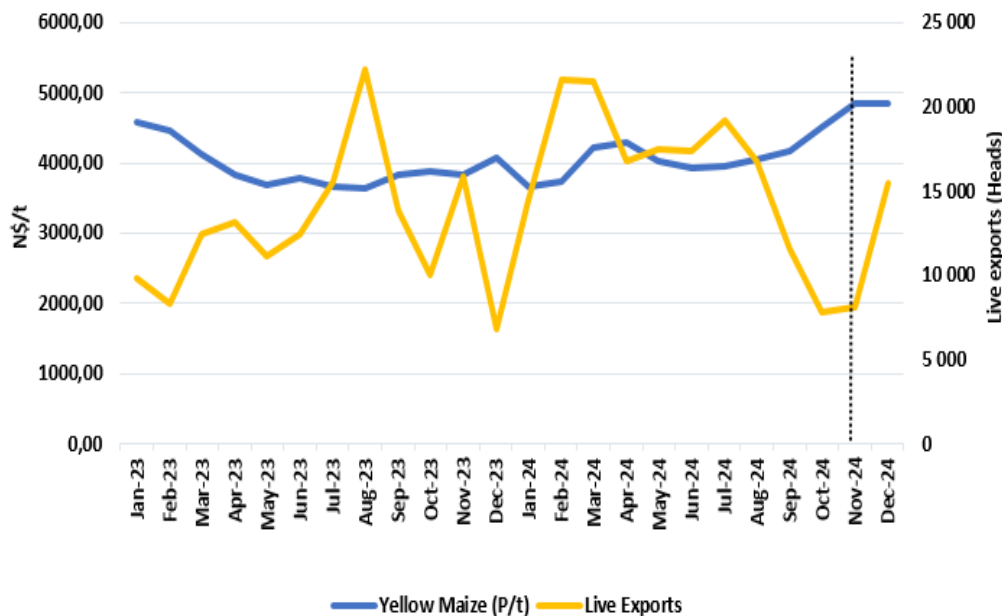
During the period under review, slaughter oxen, NAM B2 and RMAA B2 carcass prices increased by 6.61%, 0.60%, and 5.21% respectively.

The all-grade carcass price increased by 0.52%, from N\$59.10/kg recorded in October 2024 to N\$59.40/kg in November 2024.

Cattle Marketing Trends

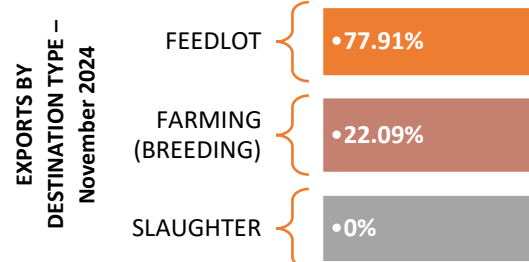


Cattle Live Exports Vs Yellow Maize



SAFEX Feed prices for Yellow Maize have continuously trended under N\$5000/ton, with November 2024 recording an average price of N\$4 857.57/t. depicting an increase of 7.81% on a month-to-month basis.

The increase in prices is attributed to supply chain challenges, strong regional demand, and influence of global market trends during the period under review.



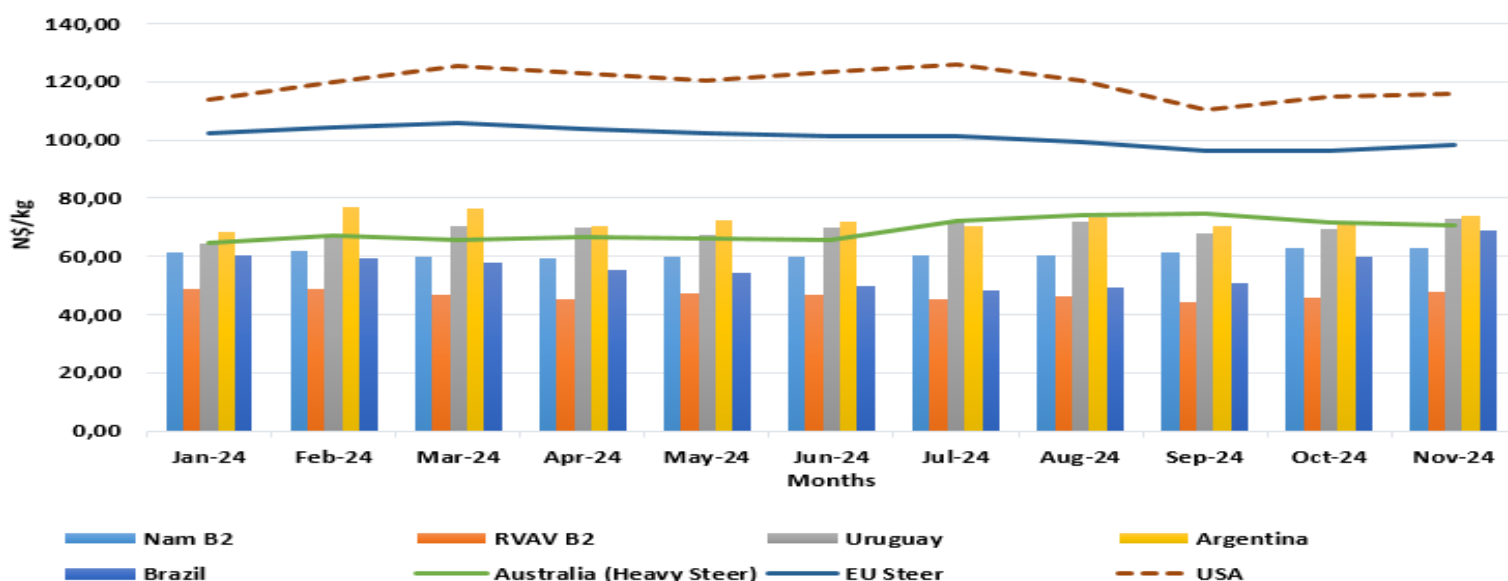
Disclaimer: All statements regarding future events reflect the Livestock and Livestock Products Board's views, and are not a guarantee of future performance or developments.

# Beef Monthly Market Watch



**LIVESTOCK  
AND LIVESTOCK  
PRODUCTS BOARD  
OF NAMIBIA**

International Price Comparisons: N\$/kg



USA prices slowed from N\$116.37/kg in November 2023 to N\$115.92/kg in November 2024, depicting a decrease of 0.38% on a year-on-year basis, and an increase of 1.10% on a monthly basis. The slight increase is attributed to an increase in production costs, increased market demand, and adverse climatic conditions.

EU steer prices have increased to N\$98.08/kg in November 2024 from N\$96.47/kg recorded in October 2024, depicting an increase of 1.67%, month-on-month basis. Brazil prices increased from N\$59.88/kg in October 2024 to N\$68.68/kg in November 2024, depicting an increase of 14.69%. Additionally, on a year-on-year basis, these prices increased by 16.68%. Month-on-month increase is attributed to reduced supply, increased export and pre-holiday demand.

The Namibia B2 prices increased by 0.60% on a month-on-month basis, and the Uruguay prices increased by 5.41% during the same period. Australian beef prices decreased by 1.42% on a month-to-month basis during the period under review.

Class B carcass price increased by 2.30% on a month-to-month basis, and by 1.55% on a year-to-year basis.

Class AB and C carcass prices decreased on a Y-O-Y basis by 2.71% and 4.31%, respectively. While class A carcass prices increased by 0.49%, year-on-year basis.

Class AB and C carcass prices decreased by 1.97% and 0.77% on a month-to-month basis, while class A carcass prices increased by 0.83% during the period under review.

Seasonal Indicators	Sep-24	Oct-24	Nov-24	Dec-24
Livestock Exports	Red	Red	Green	Green
Local Abattoir Slaughter	Red	Yellow	Yellow	Yellow
Export Abattoir Slaughter	Red	Yellow	Red	Green
NAM B2 Carcass Price	Green	Green	Green	Green
Weaner Price	Green	Green	Yellow	Yellow
<b>Decline</b>	<b>Growth</b>	<b>Steady</b>		

Beef Producer Prices: Beef Market – Namibia (N\$/kg)

	Nov-24	% Δ m/m	% Δ y/y	Oct-24	Sep-24	Aug-24
Class A	63.63	0.83	0.49	63.11	63.04	59.72
Class AB	60.97	-1.97	-2.71	62.20	61.50	60.72
Class B	62.57	2.30	1.55	61.16	59.47	59.27
Class C	57.94	-0.77	-4.31	58.39	57.71	56.07

Disclaimer: All statements regarding future events reflect the Livestock and Livestock Products Board's views, and are not a guarantee of future performance or developments.

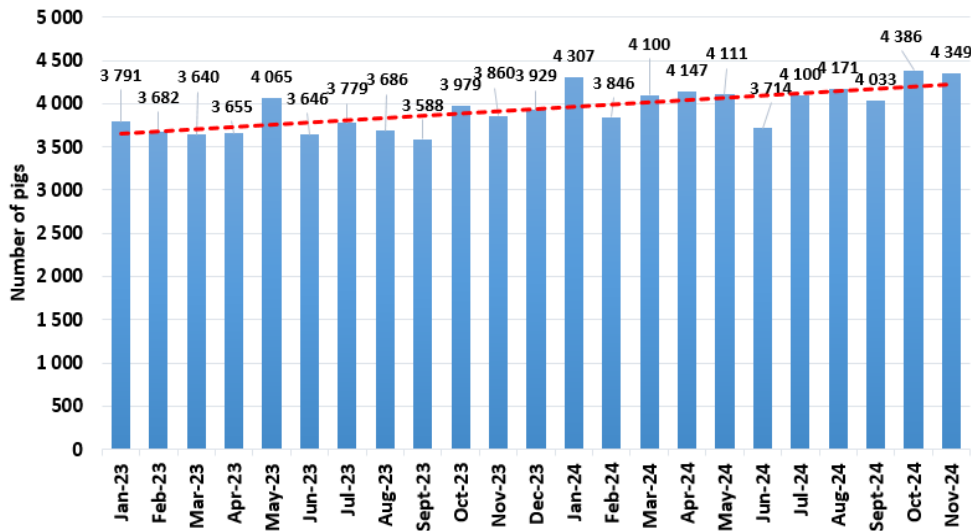
# Pork Monthly Market Watch



## November 2024 Review

A total of 4 349 pigs were slaughtered in November 2024, recording an annual increase of 12.67% from the November 2023 level, on a year-on-year basis. On a month-to-month basis, pigs slaughtered decreased by 0.84% from the previous number of 4 386 heads slaughtered during October 2024.

B & C Class Abattoir Pig Slaughter Trends - Namibia



During the period under review, the Mariental and Halooli abattoirs slaughtered 3 028 and 1 049 pigs, respectively.

Local Slaughter of Pigs (n)

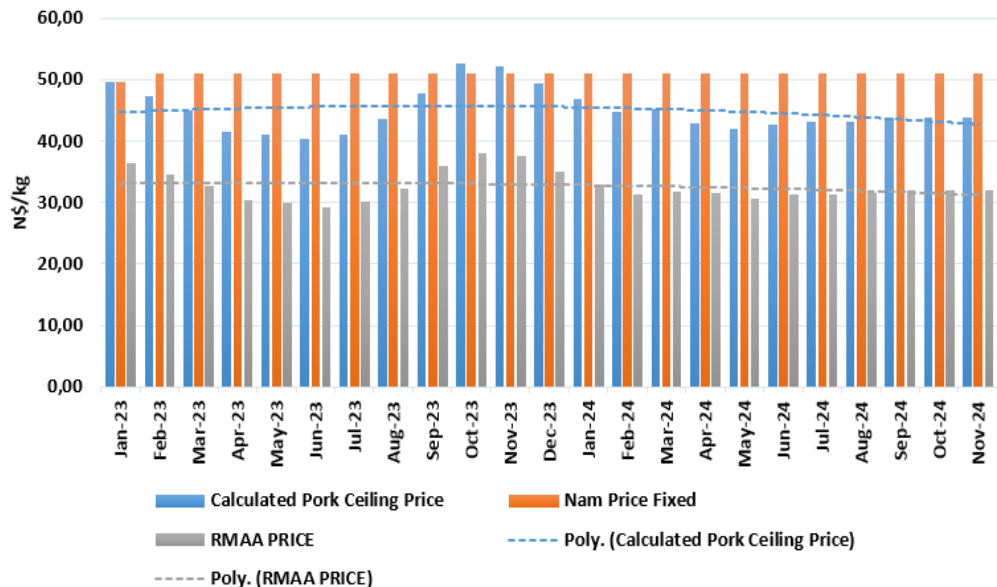
Nov-23	Oct-24	Nov-24	Δ% m/m	Δ% y/y
3 860	4 386	4 349	-0.84	12.67

The Namibian pork ceiling price under the Pork Scheme is still fixed at N\$51.03/kg in an effort to lessen the negative effects of the falling RMAA pork price, which is used as the basis for calculating the Namibian ceiling price. The Calculated pork ceiling price increased by 0.20% during November 2024.

South African (RMAA) pork prices similarly have increased from the N\$31.95/kg recorded in October 2024, to N\$32.06/kg in November. This represents an increase of 0.33% on a month-to-month basis.

Canada-Ontario recorded a price of N\$39.89/kg during November 2024, an increase of 8.45% on a month-to-month basis.

Nam Pork Ceiling Price vs RMAA Price (N\$/kg)



SAFEX Feed Prices: N\$/tonne

	Nov-24	% Δ m/m	% Δ y/y	Oct-24	Sep-24	Aug-24
Sunflower	10 865.95	7.83	19.84	10 076.78	9 132.71	8 917.59
Soya Beans	9 027.86	4.23	-3.23	8 661.87	8 529.62	8 533.00

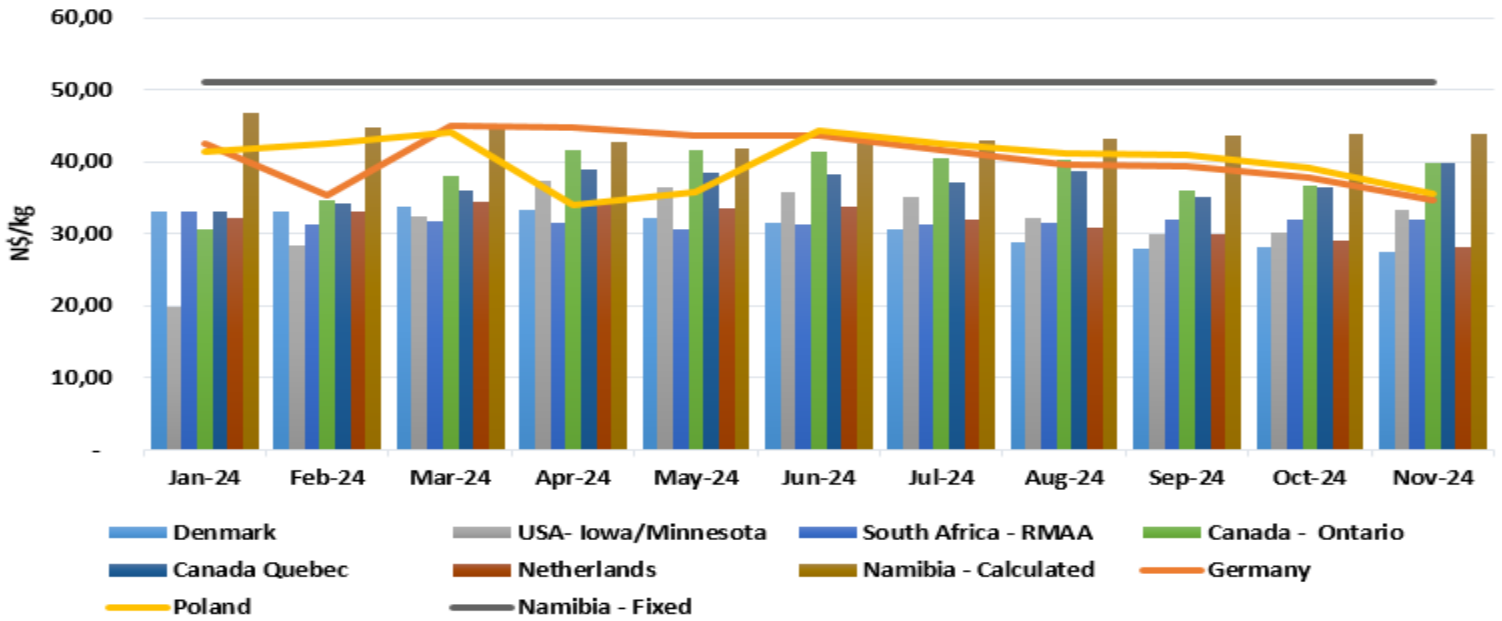
Disclaimer: All statements regarding future events reflect the Livestock and Livestock Products Board's views, and are not a guarantee of future performance or developments.

# Pork Monthly Market Watch



**LIVESTOCK AND LIVESTOCK PRODUCTS BOARD OF NAMIBIA**

**Average Int. Producer Carcass Price Comparison -N\$/kg**



## NAMIBIA PORK TRADE SNAPSHOT

YTD 2024

**6 088 315**  
Import Volume (kg)

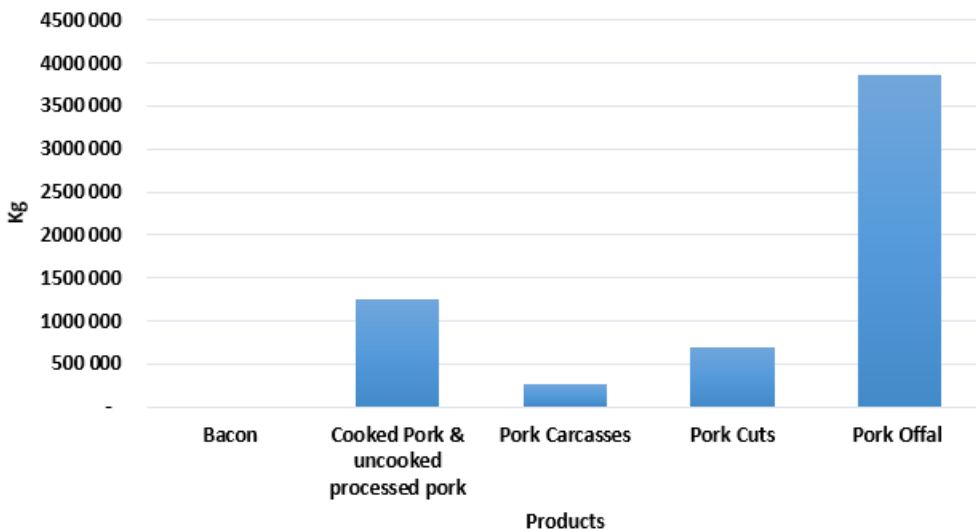
**5** Top import Countries  
 South Africa (78.87%)  
 Germany (14.08%)  
 Botswana (2.82%)  
 Portugal (2.82%)  
 Denmark (1.41%)

**5 643**  
Export Volume (kg)

**1**  
Export Country

**Processed pork products**  
**5 643**  
 Top Product Exported (kgs)

**YTD Pork Imports by Product Type**



Imports of pork carcasses increased by 29.42%, from 13 098 kg imported in October 2024 to 16 951 kg during the period under review. Processed pork products (cooked & uncooked), recorded an increase of 43.32% on a month-to-month basis.

Since January to October 2024, 64% of total pork imports comprised of pork offal, followed by cooked pork & uncooked processed pork which accounted for 21%, pork cuts at 11%, while pork carcasses accounted for 4%.

Disclaimer: All statements regarding future events reflect the Livestock and Livestock Products Board's views, and are not a guarantee of future performance or developments.